



Wall Mount POE Speaker



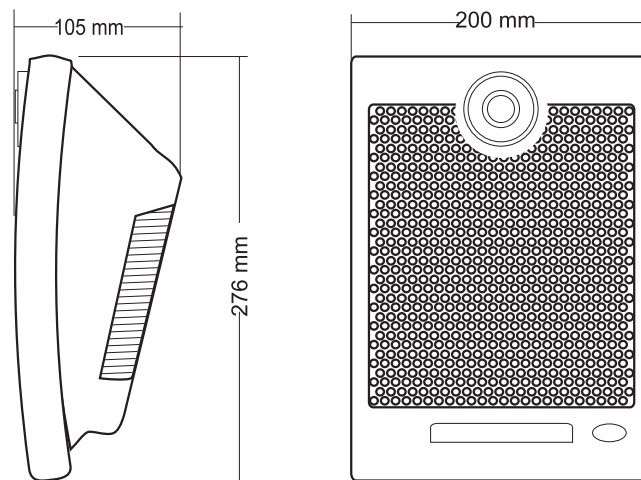
T-S7608

OWNER'S MANUAL

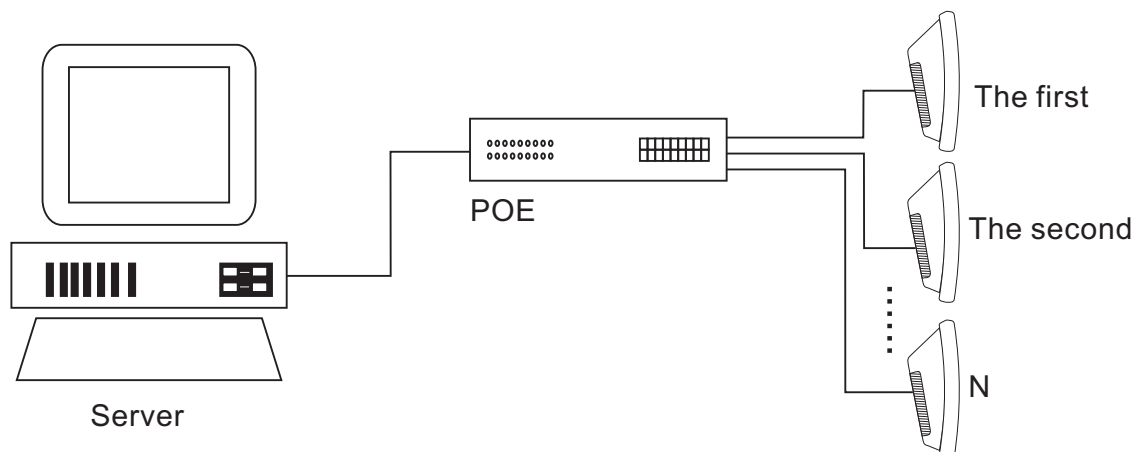
Function

1. Embed PC technology, built-in DSP Audio processing technology design and high speed industrial chip.
2. Built-in 1 channel network hardware audio decoding module, supports TCP/IP, UDP protocol, realizes network transmission of 16-bit CD sound quality audio signal.
3. Support POE (IEEE 802.3af) power supply mode, only need one network cable to connect to the POE switch. The construction is simple and convenient, and the maximum connection distance is up to 80 meters.
4. Digital power amplifier with intelligent gain adjustment, adaptive power supply and automatic power adjustment was equipped. And it is always in the working state of performance optimization and efficiency maximization.
5. Built-in full band and high sensitivity speaker unit, also with abundant power and high fidelity sound quality.

Product size



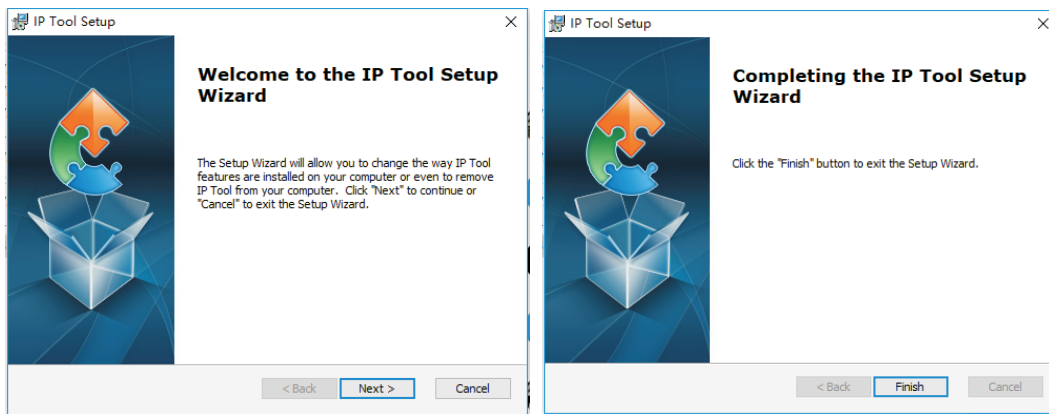
Wiring Diagram



Terminal Configuration Operating Instructions

The terminal needs to be configured before installation, before installation, need make a installation plan including terminal name, terminal IP address, gateway IP address, server IP address, location of terminal installation, and label the information on the terminal to ensure the convenient use of the device. Please save the plan as an electronic document for future maintenance. After the system planning is completed, please configure parameters of each terminal includes “terminal IP address, subnet mask, gateway and server address”.

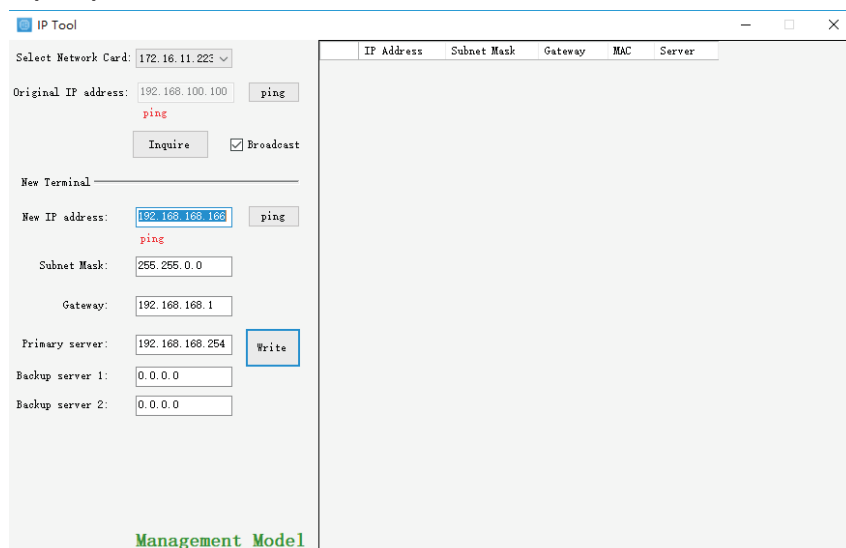
1. Installing software. Find the IP network broadcast system software installation package, double-click to open it, click on the program “terminal configuration tool”, after the installation of the program is completed, as shown below:



2. After the program is installed, a icon is generated on the desktop, as shown below:



3. Double-click the icon to run, and the “terminal configuration tool” window will pop up, as shown below:



The configuration steps:

Step 1: Connect the terminal and the computer installed with the terminal configuration tool program by the network wire, Plug in the power until the terminal power indicator is on.

Step 2: double-click to open the shortcut icon of “terminal configuration tool”, select the network card first, and left-click the “query” button in the window, to query the terminal’s original IP address. Please pay attention to: local IP address of the computer should be set in the same network segment as the terminal, because the default IP of terminal is: 192.168.168.166, so the computer’s local IP address should also be set to: 192.168.168.X, otherwise it maybe not match the IP terminal address.

Step 3: In the window of “Terminal Configuration Tool”, fill in correct “IP address”, “Subnet mask”, “Gateway IP” and “Server IP”, as below:

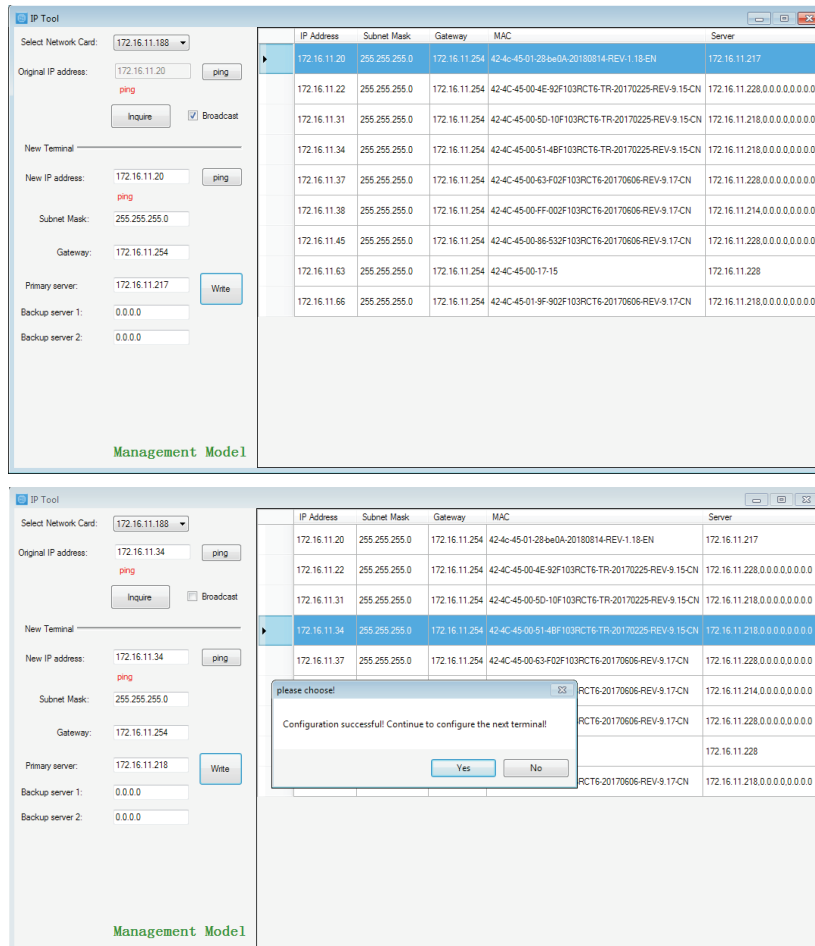
The screenshot shows the 'IP Tool' window. On the left, there are input fields for 'Original IP address' (172.16.11.20), 'New IP address' (172.16.11.20), 'Subnet Mask' (255.255.255.0), 'Gateway' (172.16.11.254), 'Primary server' (172.16.11.217), 'Backup server 1' (0.0.0.0), and 'Backup server 2' (0.0.0.0). There are 'ping' buttons next to the IP fields and an 'Inquire' button. A 'Write' button is at the bottom right of the input section. On the right, there is a table with columns: IP Address, Subnet Mask, Gateway, MAC, and Server. The table contains one row with the following values: 172.16.11.20, 255.255.255.0, 172.16.11.254, 42-4c-45-01-28-be0A:20180814-REV:1.18-EN, and 172.16.11.217. The text 'Management Model' is at the bottom left of the window.

IP Address	Subnet Mask	Gateway	MAC	Server
172.16.11.20	255.255.255.0	172.16.11.254	42-4c-45-01-28-be0A:20180814-REV:1.18-EN	172.16.11.217

Step 4: left click on the “write” button, there will be a window prompt after the successful configuration; after that, left click on the “query” button, the parameters of the terminal will be re-read by the configuration program, if it display as the same as entered one, means that the configuration was successful.

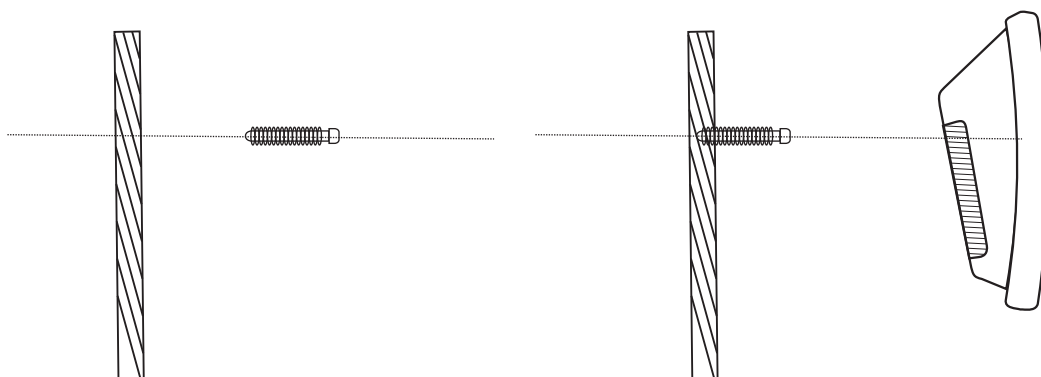
This screenshot is similar to the previous one, but it includes a small dialog box in the center. The dialog box has the title 'please choose!' and the message 'Configuration successful! Continue to configure the next terminal!'. It has 'Yes' and 'No' buttons. The 'Write' button in the background is highlighted.

Step 5: If multiple terminals are in the same network segment, you only need to modify the IP address of one terminal, it is needed to click on the terminal in the queried terminals list, then cancel the choice of broadcast on the left interface, modify the IP address and click for configuration.



Notes: If the terminal data can't be queried or the network is blocked, the pop-up window will say Reconfigure the IP address or IP address writing error. In this case, please reconfigure the network, check the network cable, and turn off the firewall, etc.

Installation Method



Step 1: Measured the hole in back panel by ruler. Find proper screw to fasten speaker on wall.

Step 2: Put hole in back panel aim at head of screw on wall, hang it lightly.

Step 3: Finish installation

Technical Parameters

Model	T-S7608
Rated power	8W
Network interface	RJ45
Communication protocol	TCP/IP, UDP, IGMP(Multicast)
Audio Format	Mp3
Sampling frequency	8K~48K
Bit rate	8K~512Kbps
Transmission rate	100Mbps
Voice frequency pattern	16 digital stereo, CD tone quality
Output frequency	80Hz~16KHz +1dB/-3dB
Harmonic distortion	≤0.1%
SNR	≥85dB
Working Temperature	5℃~40℃
Working Humidity	20%~80% Relative humidity, without moisture condensation
Power dissipation	≤12W
Power Supply	POE
Dimensions	200X105X276mm
Weight	1.2Kg

Wall Mount POE Speaker

