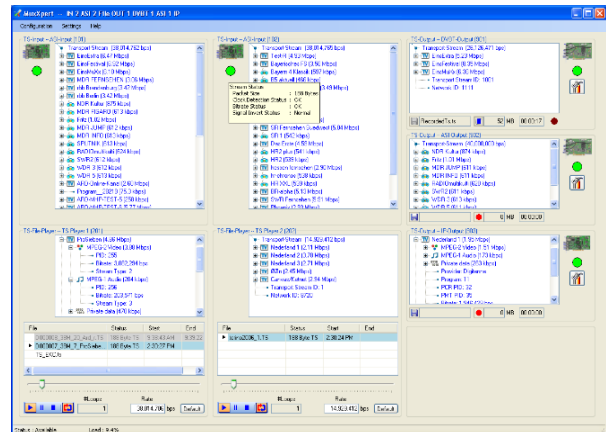


Real-Time Multiplexer

- ❑ Real-time MPEG-2 (re-)multiplexing
- ❑ PSI and DVB-SI generation and insertion
- ❑ Integrated file players

FEATURES

- Real-time multiplexing and re-multiplexing of live transport streams
- Integrated file players for the insertion of local content from disk into live streams
- Allows re-multiplexing of services and service components from any input to any output
- Automatic PSI and DVB-SI extraction, regeneration and insertion
- Recording of output transport stream
- Runs on a standard- or industrial PC with all DekTec input and output adapters
- Flexible configuration allows adaptation of PIDs, services, tables, descriptors, etc.
- User interface provides information about services, components and bitrates in the input and output transport streams



APPLICATIONS

- Master and Head-End (re-)multiplexing
- Local program insertion
- Generating transport-stream bouquets
- Creation of fully customized transport streams from files and live feeds

KEY ATTRIBUTES

Parameter	Value
Number of TS Inputs	0 .. 64*
Number of TS Outputs	1 .. 64*
Number of File Players	0 .. 32*
Sum of Input Rates	0 .. 300Mbit/s
Sum of Output Rates	0 .. 300Mbit/s

* Not all combinations are allowed and depend on CPU speed and RAM. A limited number of channels are shown in the UI.

PC REQUIREMENTS

Platform	Windows XP/2k3/Vista/7/8/10 > 2GB RAM
Processor*	P4@3.0Ghz, Core (2), Core i7

* Or equivalent AMD processor

SUPPORTED I/O ADAPTERS

Bus	Types
PCI	All DekTec PCI adapters
PCI Express	DTA-2107, 2111, 2115, 2131, 2135, 2136, 2137, 2138, 2139, 2144, 2145, 2152, 2154, 2160, 2162, 2174, 2180
USB	DTU-205*, 215*, 225*, 245*, 315*
IP	DTE-3100, 3120, 2137 Local NIC

* For evaluation and demos, not recommended for operational use.

ORDERING INFORMATION

Type	Description
DTC-700-MX	MuxXpert MPEG-2 multiplexer
DTDONG-1-MX	MuxXpert license on a USB dongle

Please refer to www.dektec.com for the latest pricing and a list of distributors and resellers