

## Thank you for choosing the Amino AmiNET124 STB

Please follow the instructions in this installation guide carefully in order to quickly and safely start enjoying the benefits of digital TV. We advise carefully reading all of the enclosed safety and installation instructions before using the AmiNET124. Please keep this installation guide close to your AmiNET124 for future reference.

Your service provider will give you a separate *User Guide* that will explain how to access the services and features that are available through your digital TV service.

## Product safety

### Warnings, Cautions and Notes

Throughout this manual, please pay special attention to the following indications of potentially hazardous situations:



#### Warning!

Indicates a hazardous situation, which, if not avoided, could result in serious injury.



#### Caution!

Indicates a situation, which, if not avoided, could damage the product or other devices.



#### Note!

Indicates additional information to the user to make the user aware of possible problems and to help the user understand, use and maintain the product.

Warnings, Cautions and Notes are included in the product literature to ensure your safety and the correct operation of the product – please adhere to them.

### Attachments

Use only the supplied accessories and attachments with your AmiNET124. Use of accessories or attachments that are not supplied or approved by the manufacturer may be unsafe, may be detrimental to the life or performance of the AmiNET124 and will immediately invalidate any product warranty.

### Water and moisture

To reduce the risk of fire or electric shock, this product, its accessories and attachments must not be exposed to any liquids, rain or moisture. The product must not be exposed to dripping, splashing or high humidity. Do not use this product in any location where it may become in contact with any liquid or vapor.

## Product care

### Servicing

This product contains no user-serviceable parts.

The product must not be dismantled. Attempts to dismantle the product may be unsafe, may be detrimental to the life or performance of the product and will immediately invalidate any product warranty.

Servicing must only be attempted by suitably qualified service personnel.

The AmiNET124 has tamper-evident seals. Breaking or modifying these seals in any manner will immediately invalidate the product warranty.

### Cleaning

The product, accessories and attachments should only require occasional wipe with a dry cloth. Unplug the mains plug from the wall outlet before cleaning the product.

The silver aluminum case of the AmiNET124 may be cleaned with a slightly damp cloth to remove stubborn marks.

Do not spray any substance or use any polishes, thinners, abrasive cleaning products, liquids or aerosol products to clean the product, its accessories or attachments.

## Unpacking and installing the product

Once removed from the transit packaging, the AmiNET124 must be handled with care and must not be dropped, shaken or exposed to any physical shock.

The AmiNET124 is designed to be mounted either horizontally or vertically on a hard flat surface.

Do not place the AmiNET124 where it may be subject to physical shock or vibration or where the product may drop, topple, slide or shake as this may cause personal injury or irreparable damage to the product, which will not be covered by the manufacturer's warranty.

Do not operate the AmiNET124 on a soft surface such as carpet, rug, bed etc as these surfaces will obstruct airflow, may cause the product to overheat and will invalidate the warranty.

Do not install the AmiNET124 into any built-in installation such as bookcase or rack without ensuring that a minimum of 4" of clear space is available at the front, rear, sides and top of the product.

Do not install the AmiNET124 where it may be exposed to direct sunlight or radiant, convected or conducted heat from an open fire or radiator.

The AmiNET124 should not be placed on any surface that may become warm in use (such as on top of a VCR or A/V amplifier) and nothing should be placed on top of the AmiNET124.

Do not cover the AmiNET124.

Objects containing liquids, such as vases, flowerpots etc must not be placed on top of the product.

Do not pick the product up or move the AmiNET124 whilst it is operating. If the product must be moved, please pull the mains power cord out of the wall socket and wait 30 seconds before moving the product.

The leads and power-supply cord must be routed where they cannot be walked on, chafed, tripped over or pinched by items being placed on or against them. Power-supply cords must not be routed underneath carpets or rugs where any damage could not be seen.

### Power sources

The AmiNET124 must ONLY be used with the power supply supplied by the manufacturer. The power supply is fitted with a plug that is designed for use with the power source of the country of installation. If it is necessary to operate the product in another country or geographical area with a different power source, an approved adapter for that country or location must be obtained from the manufacturer.

### Operation

The AmiNET124 and power supply will get warm to the touch when in use. If the AmiNET124, power supply or attachments become hot to the touch, immediately unplug the AmiNET124 from the mains electricity supply and call your service provider to arrange replacement.

### Lightning protection and not in use

If lightning is expected, or the product is not going to be used for a long period of time, please unplug the mains cord from the wall outlet, unplug the digital TV network connection from the rear of the product and unplug the video and RF leads to the Television. This will help protect the product from damage due to lightening and power surges.

### Use with Plasma displays

When used with certain display types, such as Plasma displays, it is important that the picture is not paused for a long time (greater than 5 minutes) as the image displayed may then be 'burned' permanently into the screen of the display device. This effect is not a defect of the AmiNET124 but a limitation of the display device. Amino Communications Limited will not be held liable for damage thus caused.

### Intent of use

The AmiNET124 is intended for the reception and recording of TV picture and sound signals. Any other application is expressly prohibited.

It is intended by Amino Communications Limited that this AmiNET124 be used in full compliance of all copyright laws of the United States. It is the users responsibility to comply with such laws. Unauthorized recording of copyrighted material or providing copies of such programs to others may, in certain circumstances, violate copyright law and prior permission from the copyright owners may be required for certain public performances and certain commercial uses.

### Software updates

This product is designed to evolve and as a consequence, it benefits from software updates provided and installed automatically by your service provider. Amino Communications Limited and your Service Provider reserve the right to automatically update the software on the product in order to improve the product functionality.

During software updates, the AmiNET124 cannot be used and must not be switched off until the software update is complete.

The first time it is powered, it is possible that the AmiNET124 will immediately start updating itself with the latest operating software. While the software is updating it is important that the AmiNET124 is not switched off. The software update will be complete after a few minutes and you will then be ready to enjoy the full benefits of your new digital TV service.



## Software license

### Software License Agreement

**IMPORTANT – READ CAREFULLY:** By using the software in your AmiNET124, you agree to be bound by the terms of this Software License Agreement. If you do not agree to be bound by the terms of this agreement, you must immediately cease all use of the product and return the product and all accessories, in the original packaging to your service provider.

### License Grant; Restrictions

Subject to the terms of this agreement, Amino Communications Ltd and your service provider jointly grant you a non-exclusive, non-transferable license, without the right to sub-license, to use all software included with the product or subsequently provided to you, and all documentation solely for your noncommercial use and solely in connection with your use of the product. You acknowledge and agree that Amino Communications Ltd and your service provider may periodically update, modify or enhance the product software. You agree that; a) you will not attempt to modify, enhance, disassemble, decompile, reverse engineer or otherwise attempt to gain access to the source code to the software; and b) you will not attempt to remove or unbundle the software from the product. Any resale or transfer of the product by you will be subject to the terms and conditions of this agreement.

### Ownership

Amino Communications Ltd and its licensors own and retain all proprietary rights, including all patent, copyright, trade secret, trademark and other intellectual property rights in and to the software and to any enhancements or modifications to the software. You acknowledge that the license granted under this agreement does not provide you with title or ownership to the software but only to a right of limited use under the terms and conditions of this agreement.

### Software warranties

To the maximum extent permitted by applicable law, the Company makes no representations and disclaims any and all warranties, express or implied with respect to the software, including, without limitation, any implied warranty of merchantability, fitness for purpose, non-infringement of third part rights and those arising from a course of dealing or usage of trade. No representation is made or warranty is given that use of the software will be defect free or error free or uninterrupted, that any defects or errors will be corrected or that the functionality of the software will meet your requirements. Because some US states do not allow all disclaimers of warranty, these limitations may not apply to you.

### Limitation of Liability

To the maximum extent permitted by applicable law, the Company, its suppliers and licensors will not be liable for loss of profits, business interruption, loss of information or data or other pecuniary loss or for any consequential, indirect, incidental, special, punitive or other damages whatsoever arising out of this agreement or the use or inability to use the software, even if the Company or its suppliers or licensors have been advised of the possibility of such damages. Because some US states do not allow such exclusion or limitation of liability, these limitations may not apply to you.

### Termination

This agreement and the licenses granted hereunder shall immediately terminate if you fail to comply with the license limitations described in this agreement. No notice will be required from the Company to effect such termination.

On termination of this agreement you must return all hardware, software and product documentation and accessories to the service provider.

### Export Controls

You acknowledge and agree that none of the software or underlying information or technology

may be downloaded or otherwise exported or re-exported: a) into (or to a national or resident of) Angola, Cuba, Iran, Iraq, Libya, North Korea, Sudan, Syria, or any other country to which the US has embargoed goods; or any one on the US Treasury Department's list of Specially Designated Nationals or the US Commerce Department's Table of Denial Orders. By using the software, you represent and warrant that you are not a resident or national of any such country or on any such list. This software is a commercial product and is provided with restricted rights. Use, reproduction, release, modification or disclosure of the software or any part thereof including technical data is restricted in accordance with Federal Acquisition Regulation (FAR) 21.212 for civilian agencies and Defense Federal Acquisition (DFARS) 227.7202 for military agencies.

### Miscellaneous

This agreement shall, in all respects, be governed by the laws of the State of Georgia without reference to its principles or conflicts of laws. You hereby agree that all disputes arising out of this agreement shall be subject to the exclusive jurisdiction and of and venue in the federal and state courts within Atlanta, Georgia, and you hereby consent to the personal and exclusive jurisdiction and venue of these courts.

If any of the provisions of this agreement are held to be invalid under any applicable statute or rule of law, they are, to that extent, deemed omitted. The waiver of any breach or default, or any delay in exercising any rights shall not constitute a waiver of any subsequent breach or default. This agreement constitutes the complete and exclusive agreement between you and the Company with respect of the subject matter hereof and supercedes all prior oral or written understandings, communications or agreements. This agreement may not be modified except in writing by a duly authorized representative of the Company.



# Contents

<b>Introduction</b> <b>1</b>	<b>Setting up the</b> <b>AmiNET124</b> <b>3</b>	<b>Using the Amino</b> <b>remote control</b> <b>with your</b> <b>AmiNET124</b> <b>11</b>	<b>Using the Amino</b> <b>remote control</b> <b>with your TV</b> <b>15</b>	<b>Index</b> <b>23</b>
About your AminoNET124 <b>1</b>	Unpacking the AminoNET124 <b>4</b>	Controlling the AminoNET124 <b>12</b>	Configuring the remote control <b>16</b>	
Getting started <b>1</b>	Connecting up the AminoNET124 <b>5</b>		TV brand codes <b>18</b>	
	Setting up the Amino remote control <b>9</b>		Specification <b>21</b>	

### Copyright Notice

© Amino Communications Ltd. All rights reserved.  
Printed in China.

Amino, AminET and AminET124 are trademarks of Amino Communications Limited. All other product or brand names as they appear are trademarks or registered trademarks of their respective holders.

This document contains proprietary information of Amino Communications Limited (The "Company") No part of this document may be copied, reproduced, transmitted, distributed, transcribed, stored in a retrieval system, modified or translated into any other language or computer language, or sublicensed in any form or by any means – electronic, mechanical, magnetic, optical, chemical, manual or otherwise – without the prior written consent of the Product Manager at the Company, Anderson Road, Buckingham Business Park, Swavesey, Cambridgeshire, CB4 5UQ, UK. Any unauthorized or otherwise improper use of this document or the materials herein contained by any person will subject that person to liability for damages.

### Disclaimer

The Company shall not be liable for any errors contained herein nor for any damages arising out of or related to this document or the information contained within it, even if the Company has been advised of the possibility of such damages.

This document is intended for informational and instructional purposes only. The Company reserves the right to make changes to the specifications and other information contained in this document without prior notification.

### Warranty

A warranty for your AminET124 IP STB is offered through your service provider. In the case of your AminET124 requiring servicing, please contact your service provider directly.

### Trademarks

Dolby and the double-D symbol are trademarks of Dolby Laboratories.

Manufactured under license from Dolby Laboratories.

Irdeto is the trademark of Mindport BV.

Widevine is the trademark of Widevine Technologies Inc.

Secure Media is the trademark of Secure Media Natick, MA.

Macrovision U.S. Patent numbers 4,631,603, 4,577,216 and 4,819,098 licensed for limited pay-per-view uses only. This product incorporates copyright protection technology that is protected by U.S. patents and other intellectual property rights. Use of this copyright protection technology must be authorized by Macrovision and is intended for home and other limited pay-per-view uses only unless otherwise authorized by Macrovision. Reverse engineering or disassembly is prohibited.

### Approvals

#### FCC Registration and Requirements

The following paragraphs describe requirements and information based on FCC rules:

#### FCC Rules, Part 15

This equipment has been tested and found to comply with the limits for a class B digital device, pursuant to Part 15 of the FCC Rules. These limits are designed to provide reasonable protection against harmful interference in a residential installation. This equipment generates, uses and can radiate radio-frequency energy and, if not installed and used in accordance with the instructions, may cause harmful interference to radio communications. However, there is no guarantee that interference will not occur in a particular installation. If this equipment does cause harmful interference to radio of television, which can be determined by turning the equipment off and on, the user is encouraged to try to correct the interference by one or more of the following measures:

- Reorient or relocate the receiving antenna
- Increase the separation between the equipment and the receiver

- Connect the equipment into an outlet on a circuit different from that to which the receiver is connected
- Consult the dealer or an experienced radio/TV technician for help

This device complies with Part 15 of the FCC Rules. Operation is subject to the following two conditions:

- This device may not cause harmful interference, and
- This device must accept any interference received, including interference that may cause undesired operation

Company Name: Amino Communications Ltd  
Address: Buckingham Business Park, Anderson Road, Swavesey, Cambridge, Cambridgeshire, CB4 5UQ, United Kingdom.

### Safety

The following paragraphs describe requirements and information based on CSA rules:

### Products

**Class 4871 83** – Telecommunication Equipment - (CSA 60950-00/UL 60950 – Third edition NRTL program) Certified to U.S. Standards

**Class 4871 03** - Telecommunication Equipment - (CSA 60950-00)

IP set top box, Model AminET124, rated 5V dc, 1.2A Class III

### Applicable Requirements

CAN/CSA-C22.2 No 60950-1-3- Information Technology Equipment - Safety - Part 1: General

### European Approvals

This product is manufactured to comply with the E.E.C Directives 72/23/EEC (Low voltage directive) and 89/336/EEC (EMC directive)





## Introduction

Describes the features provided by your AmiNET124 set top box.

1



## About your AmiNET124

Welcome to the AmiNET124, a stylish set top box which enables you to receive live TV and movies over your digital TV service.

You control all the functions of the AmiNET124 using the Amino infra-red remote control in conjunction with on-screen menus provided by your service provider.

### Controlling TV

The AmiNET124 will typically allow you to choose what you want to view by keying in the channel number, stepping through the channels, or by selecting programs from an on-screen electronic program guide.

### To insert a viewing card

Do not insert or remove a viewing card until prompted by the on-screen display, or you may damage the card.

- Insert the card fully into the slot on the front panel on the AmiNET124 with the gold coloured pads facing down and away from you.

## Getting started

Please refer to the next chapter for information about unpacking and connecting up your AmiNET124.

Alternatively, if your AmiNET124 has already been set up for you by your provider, see *Using the Amino remote control with your AmiNET124*, page 11, for information about using your product.





## Setting up the AmiNET124

Explains how to unpack your AmiNET124 and connect it to your TV, and the other equipment in your audio and video system.

## Unpacking the AmiNET124

The AmiNET124 and its accessories are packed in a recyclable board and plastic package. Please keep all packaging in case you need to transport the unit at a later date.

The AmiNET124 is supplied with the following accessories:



Power supply for  
AmiNET124



3 x AAA batteries for  
remote control\*



Component Video lead



Amino remote control\*

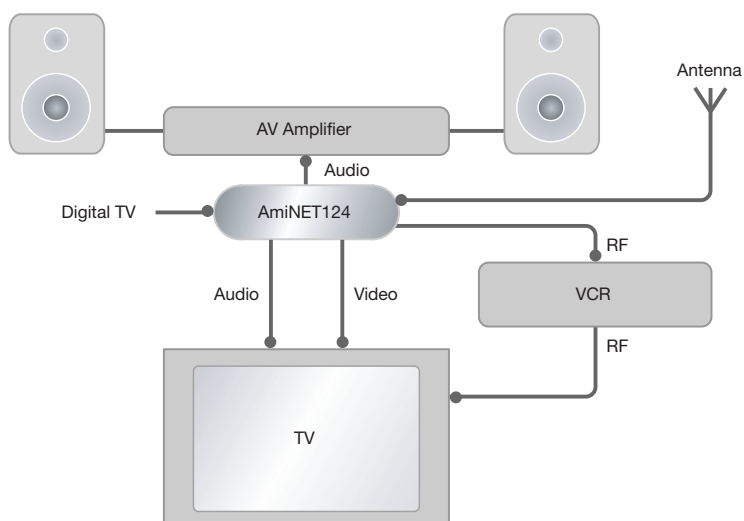
\* Your service provider may supply a different remote control from that shown.

If any of these accessories are missing please contact your service provider.

The front window of the AmiNET124 is protected with a clear plastic film, and this should be removed and disposed of before using the product.

## Connecting up the AminET124

The following diagram shows how to connect up your AminET124 in a typical installation including a TV, VCR, and AV amplifier:



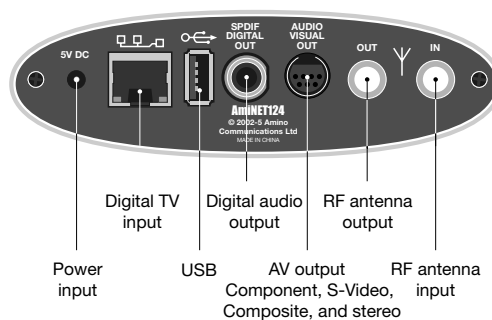
### Warning!

Before connecting or disconnecting any cables, switch off all system devices (TV, VCR, AV Amplifier, etc) and disconnect from the mains electrical supply.

If your system does not include a VCR connect the RF output from the AminET124 directly from the input of your TV.

If your system does not include an AV amplifier leave the digital output of the AminET124 unconnected.

### Back panel connections



The following sections give more detailed information about connecting the AmiNET124 to each of the other components in your system.

### Connecting RF

- Unplug the cable coming from the antenna from the back of your VCR or TV and plug it into the RF antenna IN input of the AmiNET124.
- Connect the RF antenna OUT connector on the back of the AmiNET124 to the RF IN connector on the VCR, or on the TV if you do not have a VCR, using a standard RF cable available from retail outlets.

### Connecting video

The AmiNET124 provides the following video outputs:

- Component Video (Y, Pr, Pb), which gives the best picture quality.
- S-Video, which gives good picture quality.
- Composite Video (CVBS), which gives standard picture quality.
- RF, which gives the same quality as broadcast TV.

Use the highest quality connection available on your other equipment.

- If your TV provides Component Video inputs use the Component Video lead supplied with the AmiNET124 to connect the Component Video outputs from the AmiNET124 to the Component Video inputs of the TV, taking care to match the color of each plug to its corresponding socket.
- If your TV has an S-Video or Composite Video input, an optional combined S-Video and Composite Video lead may be supplied by your service provider (Part No. 002-594). Use this to connect to the appropriate input on your TV, taking care to match the color of each plug to its corresponding socket.
- If your television only provides an RF input the AmiNET124 will deliver a good picture on the appropriate TV channel, as selected on the AmiNET124 Setup screen. The RF connection also supplies the audio, so a separate audio connection is not required.

### Connecting audio

The AmiNET124 provides the following audio connections:

- Left and right audio for stereo sound (on the AV output).
- S/P DIF digital output for high quality surround sound, when used with an external decoder and amplifier (not supplied).

If you are using the Component Video, S-Video, or Composite Video outputs you should connect the audio left and right connectors included in the lead to the television or AV amplifier to provide sound.

If you have a separate AV surround sound amplifier with electrical S/P DIF input:

- Connect the digital audio output from the AmiNET124 to a suitable digital audio input on the AV amplifier using a standard S/P DIF lead (not supplied) to allow you to listen to Dolby 5.1 surround sound, or Windows Media Audio Pro when available.

#### **Connecting to the digital TV network**

The AmiNET124 receives TV and movies from the digital TV network. Your service provider will have already installed a connection to this network.

- Connect the Digital TV network lead provided by your service provider to the Digital TV input on the AmiNET124.

#### **Connecting power**

The AmiNET124 is provided with a low voltage power supply.

- Connect the power lead from the power supply to the power input of the AmiNET124.
- Connect the mains power to your TV, video recorder, AmiNET124 power supply (using the supplied lead), and AV amplifier.



#### **Caution!**

After unpacking the AmiNET124 please wait until it has reached room temperature before applying power as condensation may damage the product.

## Setting up the Amino remote control

This section explains how to unpack and set up the Amino remote control.

Your service provider may have supplied an alternative remote control, in which case please refer to the User Guide supplied by your service provider for instructions on setting up and using the remote control.

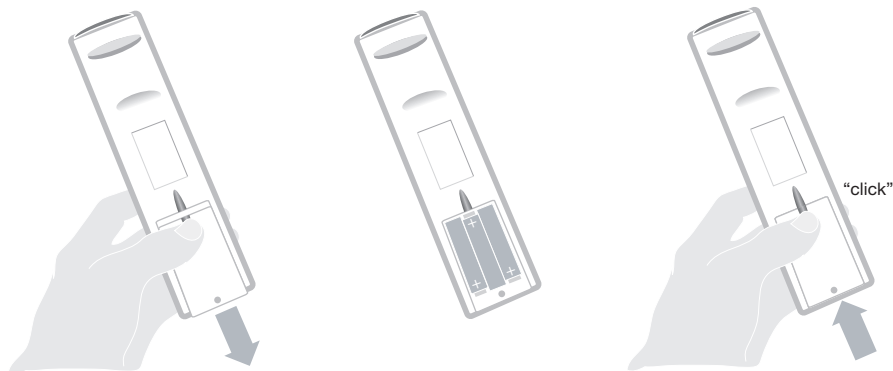
The front window of the remote control is covered with a protective clear plastic film, which should be removed and disposed of prior to use.

### Inserting batteries

The remote control requires three batteries type AAA, MN2400, UM-4, or LR03.

For best performance we recommend using Alkaline batteries.

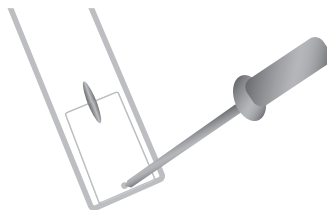
- Open the battery cover by pushing lightly on the recess and sliding the cover downwards:
- Insert the batteries, taking care to observe the correct polarity:
- Replace the battery cover by sliding the cover upwards until it clicks into place:



### Childproof feature

You can optionally secure the battery compartment with the screw provided to prevent children from opening the compartment:

- Remove the battery cover as described above, and using a suitable screwdriver remove the silver screw at the base of the remote control:



- Replace the battery cover.
- Fit the screw at the base of the cover, taking care not to overtighten it.

### Important information about using batteries

Do not mix different types of battery or old and new batteries.

Do not use rechargeable batteries with the remote control.

Remove the batteries from the remote control if you are not going to use it for several weeks, to avoid the risk of leakage.

Please respect your environment and any local regulations and dispose of old batteries in a responsible manner.

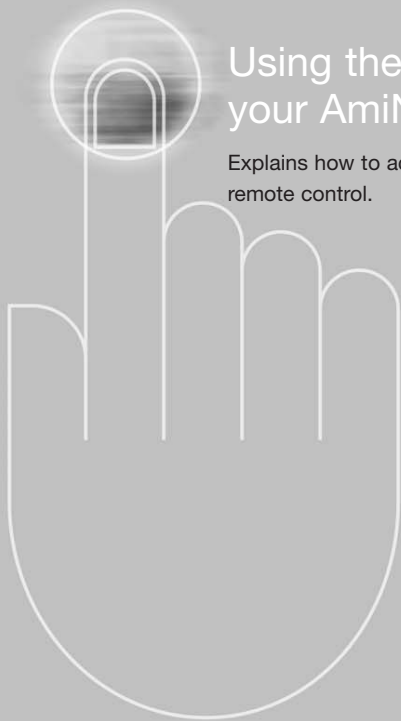


#### Caution!

Do not attempt to recharge the batteries.

Immediately remove any leaking batteries. Take care when handling leaking batteries as they may cause burns to the skin or eyes, or other physical injuries.





## Using the Amino remote control with your AmiNET124

Explains how to access all the features of your AmiNET124 using the Amino remote control.

## Controlling the AmiNET124

To control the AmiNET124 press the **STB** button on the remote control. The **STB** mode-select button will light for one second to indicate that the mode has been set.

When any valid function button on the remote is pressed, the **STB** button will light to indicate that a command is being transmitted in STB mode.

### Switching on or off

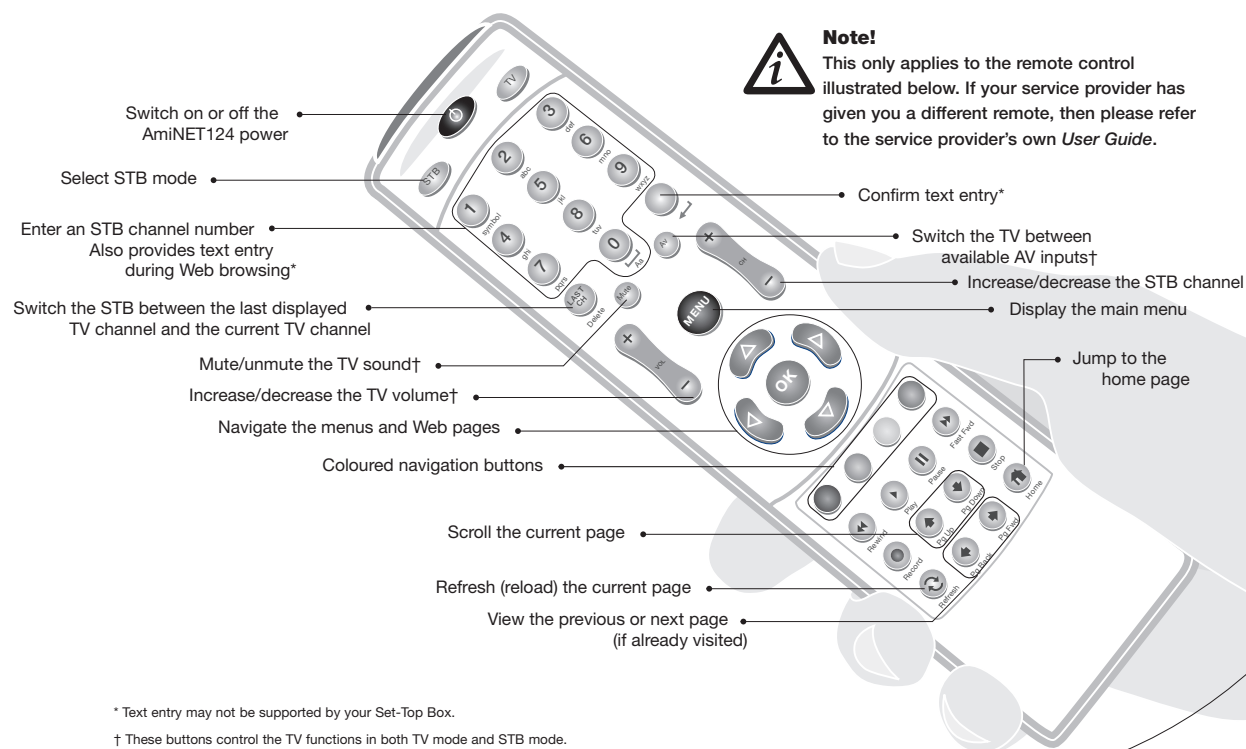
To turn the AmiNET124 on or off:

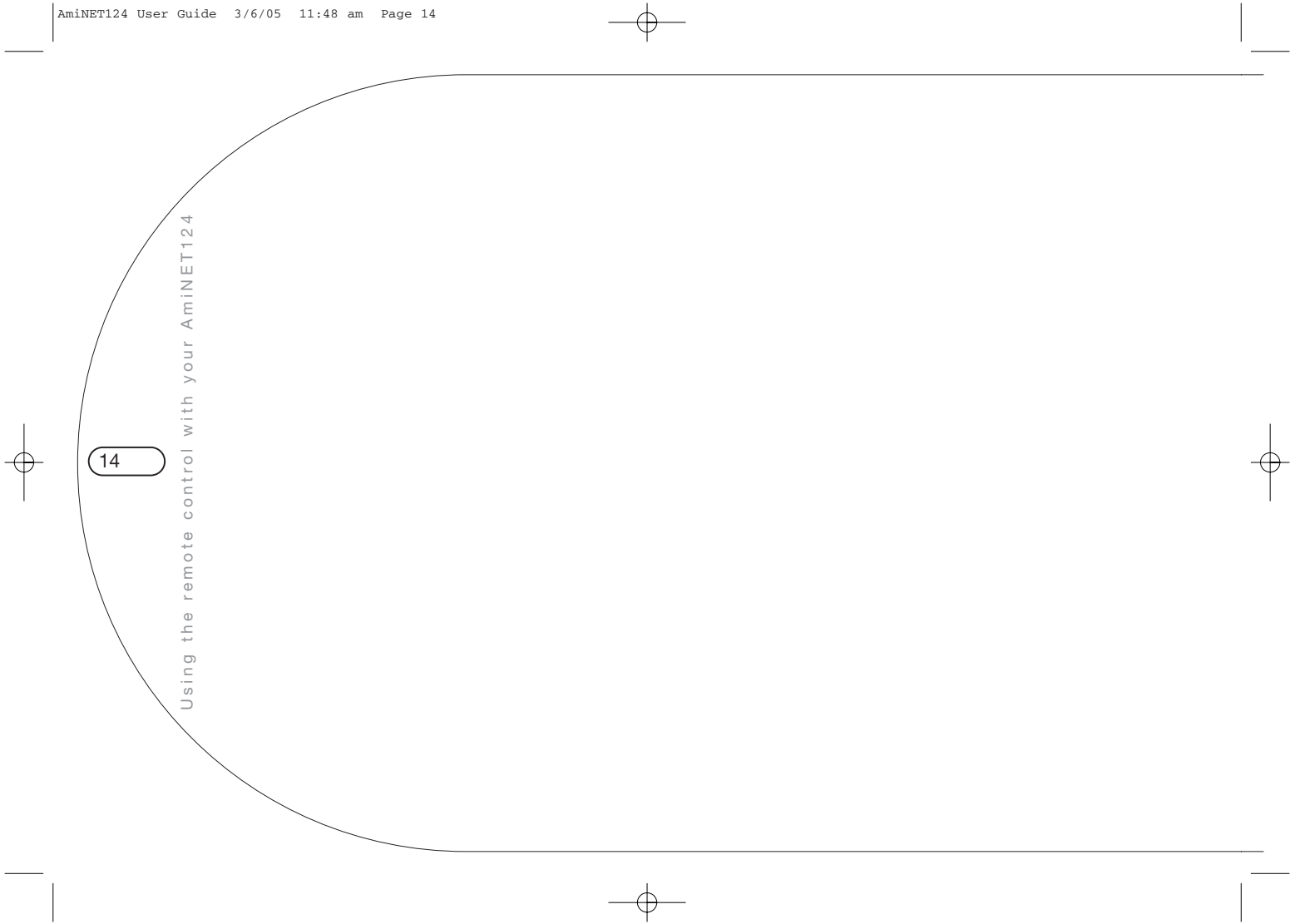
- Press the power button on the Amino remote control.

When the AmiNET124 is switched on the three status lights on the front panel show what operation it is currently performing. The meaning of each light depends on how the AmiNET124 has been set up; please refer to the *User Guide* provided by your service provider for details.

## Using the remote to control the AmiNET124

In Set-Top Box (STB) mode, the remote can control the following functions of the AmiNET124:





14

Using the remote control with your AmiNET124



## Using the Amino remote control with your TV

Explains how to set up and use the Amino remote control to operate your TV.

## Configuring the remote control

In order for the remote to transmit the correct signals to control the TV, the remote must be programmed with a three-digit code corresponding to the type of TV in use.

To do this proceed as follows:

- Identify the make of the TV; eg Sony, Magnavox etc.
- Find the TV make listed in the TV brand code tables in the next section.
- Simultaneously press and hold the **TV** and **OK** buttons on the remote.

After approximately two seconds, the **TV** button will light.

- Release the **TV** and **OK** buttons.

The TV button remains illuminated.

- Enter the three-digit brand code according to the make of the TV that is being controlled.

As each of the digits are entered, the **TV** button will briefly flash off and on again

When the third digit has been entered, the **TV** button will go out.

If a TV brand code has been entered that the remote does not recognize, the **TV** button will flash rapidly for a second and remain illuminated. If this happens: re-enter the correct TV brand code.

- Verify that the remote control works with the TV.

Most TV makes have more than one brand code listed in the brand code table – if this is the case try all brand codes that are listed for that make until a suitable match is found.

If no brand code is listed for the TV, try brand codes for Philips and NEC TVs.

If no brand code works for your TV, please contact your service provider who may be able to help.

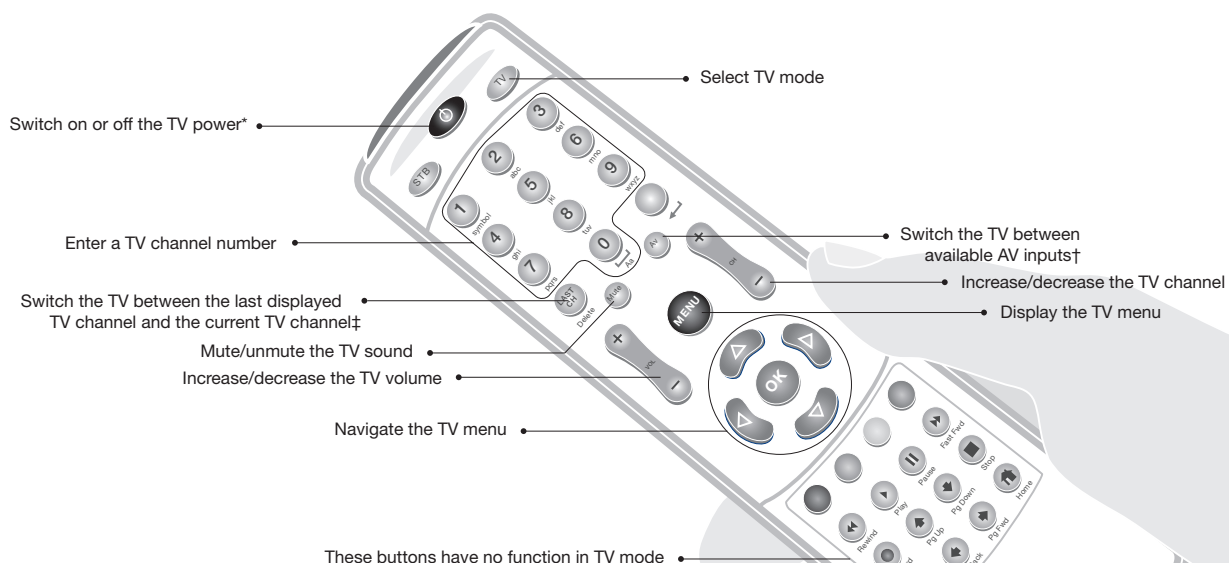
### Controlling a TV

To control the TV press the **TV** button on the remote control. The **TV** mode-select button will light for one second to indicate that the mode has been set.

When any valid function button on the remote is pressed, the **TV** button will light to indicate that a command is being transmitted in TV mode.

## Using the remote control to control a TV

In TV mode, the remote can control the following TV functions:



\* All TVs will power off with this button. Some TVs will switch on when the power button is next pressed and other TVs will only power on when a channel button or channel +/- is pressed.

† Some TVs will cycle through available AV inputs using the Channel +/- button. Other TVs only use the AV button to access the AV inputs.

‡ Not all TVs support this function.

§ Some TVs use the menu, navigation and OK buttons to access settings that are not commonly changed (Closed-caption display, for example). Not all TVs support this function.

## TV brand codes

A TANDY	094
ABEX	115
ADMIRA	114, 127, 200
ADVENTURA	113
AIKO	105, 112, 197
AIWA	148
ALARON	109, 217
AKAI	033, 110, 111, 157
ALBA	043
ALLERON	109
AMBASSADOR	108
AMERICA	105
AMPRO	234
AMSTRAD	048, 108
ANAM	025, 104, 105, 106, 107
ANAM NATIONAL	104, 214
AOC	036, 041, 102, 103, 111, 116
ARCHER	116
AUDIOSONIC	100
AUDIOVOX	105, 116, 197, 199
BAUER	044
BAUR	100
BAYSONIC	105
BEIJING	151, 155, 156
BELCOR	036, 103, 157
BELL & HOWELL	038, 098, 099
BEON	100

BRADFORD	105
BROCKWOOD	036, 103
BROKSONIC	083, 116, 200
BUSH	100
CANDLE	035, 036, 041, 096, 097, 111, 113, 215
CAPEHART	102
CARNIVALE	041, 157
CARVER	010, 163, 213
CATHAY	100
CELEBRITY	095, 195, 232
CENTURION	041
CHANGHONG	154, 155, 156, 162
CINERAL	105, 197, 199
CITIZEN	035, 036, 041, 092, 093, 094, 096, 097, 105, 111, 112, 113, 149, 197, 215
CLAIRTONE	101
CLARIVOX	100
CONCERTO	035, 097, 215
CONROWA	175
CONTEC	090, 091, 101, 105
CORANDO	094
CRAIG	025, 105
CROSLEY	163, 213
CROWN	094, 105
CURTIS MATHES	016, 036, 038, 041, 055, 069, 075, 093, 094, 098, 111, 114, 127, 149, 163, 196, 198, 212, 213, 215, 219, 228, 229, 231, 233
CXC	105

DAEWOO	029, 030, 033, 036, 072, 094, 100, 103, 105, 112, 119, 153, 157, 158, 159, 160, 199, 197
DANSAI	100
DAYTRON	036, 094, 103
DENON	069
DECCA	027, 100
DIXI	033, 100, 107
DUMONT	001, 036, 089, 103
DWIN	076
DYNATECH	088
ELECTROBAND	095, 101, 195, 232
ELECTROHOME	094
ELECTRON	094
ELIN	100
ELTA	033
EMERSON	000, 002, 006, 007, 008, 009, 011, 036, 038, 041, 081, 082, 083, 084, 085, 086, 087, 090, 092, 094, 098, 101, 103, 105, 108, 109, 200, 217
ENVISION	036, 041, 111
ERRES	100
ETRON	033
FERGUSON	100
FINLUX	100
FISHER	017, 038, 080, 098
FORMENTI	044
FORMONTI	100
FORTRESS	114
FUJITSU	109, 217, 224

FUNAI	048, 105, 109, 141, 150, 152, 217
FUTURETECH	105
GE	013, 016, 020, 036, 041, 075, 076, 077, 078, 079, 081, 086, 104, 114, 127, 196, 199, 212, 214, 228, 229, 231, 233
GEC	027, 100
GEMINI	039
GENEXXA	043
GIBRALTER	089, 103, 111
GOODMANS/TASHIKO	027, 066, 100
GRADIENTE	028, 065, 157, 215
GRANADA	100
GRUNDIG	178, 179, 180, 181, 182, 183, 184, 185, 186, 187, 188
GUNPY	105, 109, 217
H/K	072
HALLMARK	036, 041, 086
HANSEATIC	100
HARLEY Davidson	109, 217
Harman/Kardon	163, 213
HARVARD	105, 106
HINARI	100, 109
HITACHI	018, 035, 067, 068, 069, 070, 071, 087, 094, 097, 135, 215
HYPSON	100
IMA	105
INDIANA	100
INFINITY	163, 213



INFINITY REFERENCE	010	MAGNAVOX	010, 034, 039, 040, 041, 042, 058, 059, 060, 061, 063, 066, 096, 111, 163, 213, 217, 218, 230	MULTITECH	088, 105, 127	PHILIPS	010, 040, 069, 100, 157, 163, 200, 213
INTERFUNK	100			NAD	036, 055, 062, 086, 105	PHONOLA	100
INTEQ	001, 089			NEC	024, 035, 036, 041, 066, 097, 103, 105, 111, 132, 171, 215	PILOT	010, 036, 041, 094, 103, 111, 163
ITT	061	MAJESTIC	099	NECKERMANN	100	PIONEER	051, 055, 087, 157, 223
JANEIL	113	MARANTZ	010, 022, 036, 041, 100, 111, 213	NEI	100	PORTLAND	036, 094, 103, 105, 112, 198
JBL	010, 163, 213	MARK	100	NIKKAI	027, 043, 100, 115	PRICECLUB	093
JCB	095, 195, 232	MATSUSHITA	019	NIKKO	036, 041, 086, 105, 111, 112, 197	PRINCETON	227
JENSEN	031	MATSUI	027, 033, 100	NOSHI	053	PRISM	075, 157, 197, 212
JINXING	153, 154, 155, 156, 157, 162, 163, 164, 165, 169, 173	MEDIATOR	100	NOVABEAM	072	PROSCAN	075, 076, 228, 233
JVC	026, 028, 064, 065, 066, 084	MEGATRON	036, 041, 069, 086, 116	NTC	105, 112, 157	PROTECH	100
KAWASHO	090	MEI	101	ONWA	041, 105, 157, 197	PROTON	036, 050, 086, 094, 102, 116, 196, 219
KAYPANI	102	M-ELECTRONIC	100	OPTIMUS	038, 055, 105	PULSAR	001, 036, 041, 089
KEC	105	MEMOREX	022, 033, 036, 038, 041, 057, 086, 097, 098, 099, 177, 215, 217	OPTONICA	019, 054, 098, 114, 198	PULSER	103
KENWOOD	036, 041, 103, 111			ORION	083, 100, 127, 217	QUASAR	025, 075, 089, 104, 157, 212, 214
KLOSS	063, 072, 113	METZ	179, 183, 189, 190, 191, 192, 193, 194	OSAKI	027, 115	QUELLE	100
KONKA	221, 222, 225, 226	MGA	022, 036, 056, 041, 057, 086, 103, 111	OTTO VERSAND	100	RADIO SHACK	036, 041, 038, 054, 075, 094, 103, 105, 112, 115, 127, 157, 196, 215, 228, 233
KTV	041, 092, 094, 101, 105, 111	MIDLAND	001, 019, 075, 076, 089, 094, 115, 200, 212, 228, 233	PANASONIC	010, 019, 025, 075, 083, 104, 109, 131, 137, 143, 200, 212, 214	RADIOLA	100
LEYCO	100	M-ELECTRONIC	075, 089, 196	PANDA	154, 172	RCA	005, 014, 015, 018, 019, 036, 041, 049, 053, 075, 076, 077, 087, 103, 114, 212, 216, 223, 228, 229, 233, 231, 235, 236, 237
LG(GOLDSTAR)	003, 012, 035, 036, 041, 073, 074, 086, 094, 097, 100, 103, 111, 115, 215	MINUTZ	079	PENNY	016, 019, 036, 041, 052, 053, 062, 073, 075, 076, 078, 079, 086, 093, 094, 103, 104, 111, 115, 116, 212, 215, 228, 231, 233	REALISTIC	036, 038, 041, 054, 086, 094, 097, 098, 103, 105, 111, 115, 157, 196, 215
LIESENK & TTER	100	MITSUBISHI	022, 032, 036, 056, 057, 066, 079, 086, 103, 110, 114, 138	PEONY	156, 162	RHAPSODY	101
LLOYTRON	094	MONTGOMERY	109	PHILCO	036, 041, 058, 059, 060, 061, 062, 063, 069, 075, 079, 096, 103, 111, 149, 157, 196, 213	R-LINE	100
LOEWE	100	MOTOROLA	022, 041, 104, 114, 127, 157, 214				
LOGIK	099, 177	MTC	035, 036, 041, 088, 093, 097, 101, 103, 111, 149, 215				
LUXMAN	035, 097, 215						
LXI	010, 036, 038, 041, 062, 076, 086, 099, 163, 196, 213, 228, 233						

RUNCO	001, 041, 089, 098, 105, 111, 157, 220	SIGNATURE	099, 177	TEKNIKA	010, 022, 035, 036, 057, 093, 094, 096, 097, 099, 103, 105, 109, 112, 113, 157, 163, 177, 197, 213, 215, 217	WHITE	036, 041, 111, 200
SAISHO	033, 108	SIMPSON	058, 096, 218			Westinghouse	
SAMPO	036, 041, 094, 102, 105, 111, 115	SOLAVOX	115			XOGEGO	161, 162, 166, 174, 176
SAMSUNG	033, 034, 035, 036, 041, 086, 093, 094, 097, 100, 103, 111, 115, 149, 215	SONOKO	100			YAMAHA	036, 041, 103, 111
		SONTEC	100	TELEFUNKEN	157, 215	YOKO	100
SAMSUX	094	SONY	037, 045, 066, 084, 095, 128, 144, 195, 232	TELETECH	033	ZENITH	001, 004, 089, 099, 105, 177, 197, 200
SANSEI	199	SOUNDESIGN	036, 041, 086, 096, 105, 109, 217	TERA	050		
SANSUI	200	SOUNDWAVE	100	THAKRAL	167	ZONDA	116
SANYO	017, 023, 027, 038, 066, 080, 091, 098, 123, 125, 126, 202, 203, 204, 205, 206, 207, 208, 209, 210, 211	SPECTRICON	116	THORM	100	ビクター	120, 121, 122
		SQUAREVIEW	048, 141	TMK	035, 036, 041, 086, 097, 108, 215	シャープ	124, 127
SBR	100	SSS	036, 089, 103, 105, 157	TNCI	001	ゼネラル	129
SCHEIDER	100	STAR-LITE	105	TOSHIBA	038, 052, 062, 066, 093, 098, 130, 149	バイオニア	133
SCIMITSU	036, 103, 157	SUPREM	095, 195, 232	TOSONIC	101	フナイ	134, 136, 141, 145
SCOTCH	036, 041, 086	SUPRE-MACY	113	TOTEVISION	094	ダカス	140, 142
SCOTT	036, 041, 083, 086, 094, 103, 105, 109, 217	SURPA	035, 097	TRICAL	091	サムソン	146
		SYLVANIA	010, 036, 041, 044, 058, 059, 060, 061, 063, 096, 111, 157, 163, 213	UNIVERSAL	078, 079	インターコンプ	149
SEARS	010, 016, 017, 035, 036, 038, 041, 048, 052, 062, 076, 080, 086, 097, 098, 109, 141, 163, 196, 213, 215, 217, 228, 233	SYMPHONIC	048, 141	UNIVERSUM	100	14M01 ベスト(型式)	134, 136, 141, 145
		SYSLINE	100	VECTOR	036, 041, 111 RESEARCH	14M02 ベスト(型式)	146
SEMIVOX	105	TANDY	027, 043, 114, 127	VESTEL	100	14M10 ベスト(型式)	147
SEMP	062	TATUNG	027, 088, 100, 104, 116, 214	VICTOR	028, 065	20M01 ベスト(型式)	134, 136, 141, 145
SHANGHAI	156, 168	TCL	156, 163, 170	VIDEO CONCEPT	110	20M02 ベスト(型式)	134, 136, 141, 145
SHARP	046, 047, 054, 066, 091, 091, 111, 114, 127	TECHNOL ACE	109, 217	VIDIKRON	010, 021, 163, 213	20M03 ベスト(型式)	132
SHOGUN	036, 103, 157	TECHNICS	019, 075, 212	VIDTECH	036, 041, 086, 103	25M010 ベスト(型式)	147
		TECHWOOD	035, 075, 097, 157, 212, 215	VIKING	113	D25AV10 ベスト(型式)	147
				WARDS	010, 036, 041, 045, 054, 058, 059, 060, 061, 077, 078, 079, 086, 097, 099, 103, 109, 111, 177, 213, 215, 217		
				WATSON	100		

## Specification

(Multiple standards)

### AminET124

#### Physical specifications

Weight 280g (9.9oz)

Dimensions (including rear connectors but excluding base) (approximately)  
110mm (4.33") long,  
115mm (4.53") wide,  
38mm (1.50") high

Operating Temperature 0°C (32°F) to 40°C (104°F)

Storage Humidity 5% ~ 95% RH (non-condensing)

#### RF Modulator

RF Input connector 75Ω F Connector

Output channel VHF channel 3 or 4 (US)  
UHF channel 21 to 68 (EU)  
UHF channels 1 or 2 (Japan)

TV standard PAL/NTSC standard definition

RF output connector 75Ω F Connector

#### Ethernet Interface

Ethernet connector RJ-45 shielded connector

Cabling UTP and STP Cat 5

Speed Auto sensing 10/100Mbit/s

Indicators Green LED - Link,  
Yellow LED - Activity

#### USB Interface

Type USB 2.0

#### Analogue Audio

Audio Connectors RCA, White = Left channel,  
Red = Right channel

Output 2v RMS nominal

Impedance 10kΩ

#### Smart Card

Type ISO 7716 parts 1, 2 &amp; 3

Voltages 3.3v and 5v cards supported

#### Digital Audio Interface

Type S/P DIF electrical to  
IEC 61937

Connector RCA (Black)

Impedance 75Ω

Output 0.4Vpp .. 0.6Vpp, <0.05Vdc  
(75ohm terminated)

#### Power Interface

Connector DC10B 2.1mm x 5.5mm

Type DC power socket, centre  
positive

Input 5V ± 10%

Power Max 6W

#### Transport stream decoding

MPEG MPEG-2 ISO/IEC 13818

#### Transport Stream Specification

Profile MPEG-4 pt10/H.264  
MPEG-4 pt2  
MPEG-2 pt2

Aspect Ratio 4:3, 16:9

Video Resolution NTSC (720 x 480i),  
PAL (720 x 576i)

Graphics Resolution 640 x 480 (525 line) NTSC or  
640 x 576 (625 line) PAL,  
15-bit RGB color, Alpha  
blending.

Audio Decoding Dolby Digital (AC-3),  
MPEG-1 layers I and II,  
MPEG-4 low complexity  
AAC, 16-bit PCM

### Video Cables

#### Composite Video Interface

Type Composite Video

Connector RCA (Yellow)

Output 1Vp-p

#### S-Video

Type Y/C (separate Luminance  
and Chrominance)

Connector 4-pin Mini-DIN

Output 1Vp-p

#### Component Video

Type Separate Luminance and  
Red and Blue color  
difference signals

Connectors 3 x RCA, Green = Y,  
Red = Pr, Blue = Pb

Output 1Vp-p

### External Power Supply

#### Specification

Type High-efficiency switch-mode

Input 100~240V AC, 50~60Hz,  
0.2A Max

Output 5V DC, 6W, 1.2A

Weight (not including  
mains cable and plug)  
(approximate) 120g (4.2oz)

Dimensions (approximate)  
90mm (3.5") long  
60mm (2.4") high  
50mm (2.0") wide

### Packaging

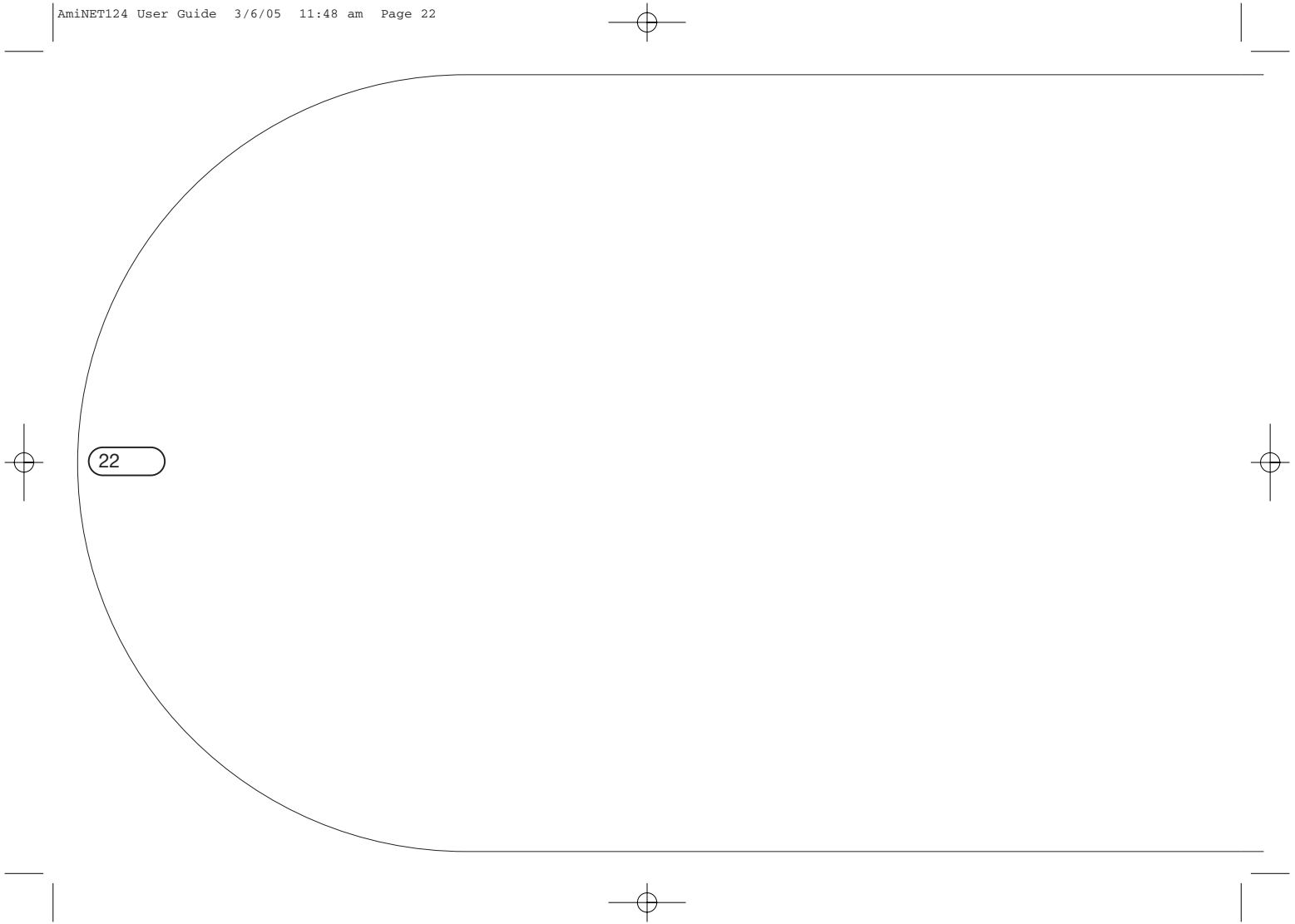
#### Specification

Type Cardboard Printed Gift-Pack

Weight (includes power supply, US

mains lead, Amino  
Remote control and  
all leads)

Dimensions (approximate)  
70mm (2.6") high,  
310mm (12.2") wide,  
205mm (8.0") deep



# Index

**A**

- accessories 4
- Amino remote control 9
  - childproof feature 10
  - configuring 16
  - functions in STB mode 13
  - functions in TV mode 17
  - inserting batteries 9
- audio connections 7

**B**

- back panel connections 6
- brand codes 18

**C**

- connecting the AminoNET124 5
- connections 6
  - audio 7
  - RF 6
  - video 7

**D**

- digital TV network, connecting to 8

**P**

- power, connecting 8

**R**

- remote control 9
  - childproof feature 10
  - configuring 16
  - functions in STB mode 13
  - functions in TV mode 17
  - inserting batteries 9
- RF connections 6

**S**

- STB mode functions 13
- switching on or off 12

**T**

- TV brand codes 18
- TV mode functions 17
- TV, controlling 16

**U**

- unpacking the AminoNET124 4

**V**

- video connections 7

