

4MP LightHunter Intelligent Bullet Network Camera

IPC264SA-AHDX4K-I1



Features

- High quality image with 4MP, 1/1.8" CMOS sensor
- 2688*1520@60fps in the main stream, deliver detailed live while 60fps keeping it smooth and closer to the real image
- Ultra 265, H.265, H.264, MJPEG
- Smart intrusion prevention, support false alarm filtering, include Cross Line, Intrusion, Enter Area, Leave Area detection
- Face capture, automatic selection of best snapshots and face attribute collection
- LightHunter technology ensures ultra-high image quality in low illumination environment
- Up to 120 dB Optical WDR (Wide Dynamic Range)
- 5 mixed-lights, up to 120m IR range, up to 30m warm light
- DC 12V or PoE (IEEE 802.3at) power supply
- Built-in heater, allow low temperature start-up at -40°C
- Audio 2 in and 1 out, Alarm 3 in and 2 out

- IP67,IK10
- *Intelligent function supported when frame rate is below 30

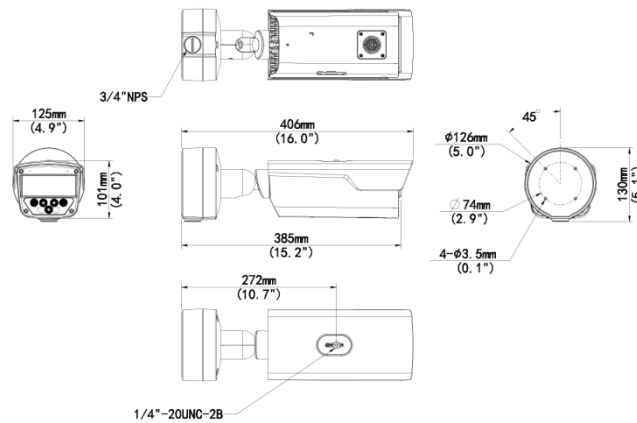
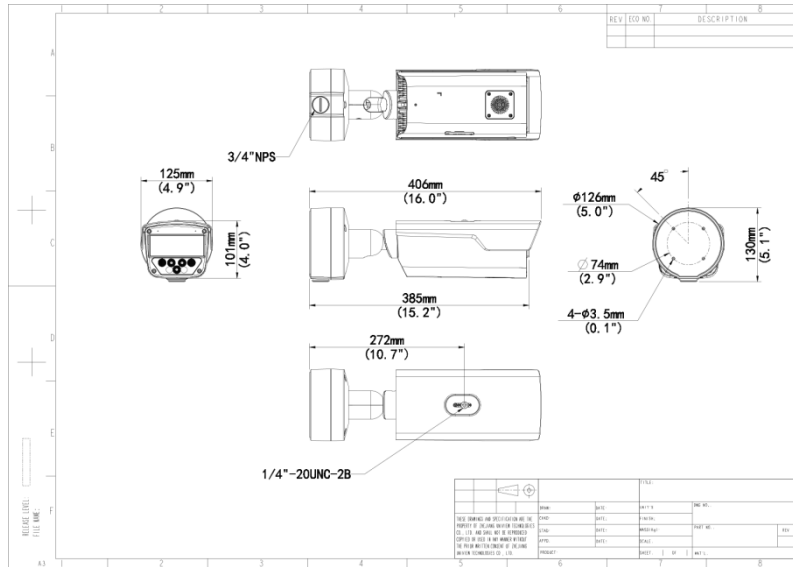
Specifications

Camera	Description
Sensor	1/1.8"CMOS
Min. Illumination	Colour:0.001lux (F1.6, AGC ON) 0 lux with Light
Day/Night	IR-cut filter with auto switch (ICR)
Shutter	Auto/Manual, 1 ~ 1/100000s
WDR	120dB
S/N	>56dB
Lens	Description
Lens type	8~32mm
Iris	F1.6
Field of View (H)	42.6°~23.5°
Field of View (V)	15.2°~8.9°
Field of View (D)	52.4°~27.7°
DORI	Description
DORI Distance□Lens□	8~32(mm)
DORI Distance□Detect□	165.7m(543.7ft)~444.4m(1458.1ft)
DORI Distance□Observe□	66.3m(217.5ft)~177.8m(583.2ft)
DORI Distance□Recognize□	33.1m(108.7ft)~88.9m(291.6ft)
DORI Distance□Identify□	16.6m(54.4ft)~44.4m(145.8ft)
Illuminator	Description
IR Range	Up to 120m (393.7 ft)
Warm Light Range	Up to 30m (98.4 ft)
Wavelength	750nm
IR On/Off Control	Auto/Manual
Video	Description
Video Compression	Ultra 265&H.265&H.264&MJPEG
Frame Rate	Main Stream: 4MP(2688*1520),Max 60fps; Sub Stream: 2MP(1920*1080), Max 60fps; Third Stream: D1 (720*576), Max 60fps
Video Bit Rate	128 Kbps~16 Mbps
ROI	Up to 8 areas
Video stream	Triple streams
OSD	Up to 8 OSDs

Privacy Mask	Up to 8 areas (8 blacks / 8 mosaics)
Image	Description
White Balance	Auto;Outdoor;Fine Tune;Sodium Lamp;Locked;Auto2
Digital noise reduction	2D/3D DNR
Smart IR	Support
Flip	Flip Vertical;Flip Horizontal;Normal;180°;90°Clockwise;90° Anti-clockwise
HLC	Support
BLC	Support
Defog	Digital Defog
Intelligent	Description
Smart intrusion prevention	Support false alarm filtering: Cross line detection, Intrusion detection, Enter area detection, Leave area detection
Face Capture	Face capture Face attributes: Gender, Age range, Glasses, Mask
Events	Description
Basic Detection	Motion detection;Audio detection;Tampering alarm
General Function	Watermark;IP Address Filtering;Access Policy;ARP Protection;RTSP Authentication;User Authentication;HTTP authentication;Alarm input;Alarm output
Audio	Description
Audio Compression	G.711U;G.711A
Audio Bitrate	128 Kbps
Two-way Audio	Support
Suppression	Support
Sampling Rate	16KHZ
Storage	Description
Edge Storage	Micro SD up to 256 GB
Network Storage	ANR;NAS(NFS)
Network	Description
Protocols	IGMP;RTP;SMTP;IPv4;IPv6;TCP;ICMP;ARP;UDP;DHCP;PPPoE;RTSP;RTCP;RTMP;DNS;DDNS;NTP;FTP;UPnP;HTTP;HTTPS;802.1X;SNMP;QoS;SSL/TLS;SSH
Compatible Integration	API;SDK;ONVIF (Profile S, Profile G, Profile T)
User/Host	Up to 32 users. 3 user levels: administrator,common user and operator
Security	Password protection&Strong password&HTTPS encryption&Export operation logs&Basic and digest authentication for RTSP&Digest authentication for HTTP&TLS 1.2&WSSE and digest authentication for ONVIF
Client	EZStation; EZLive;EZView
Web Browser	Plug-in required live view: IE 10 and above,Chrome 45 and above,Firefox 52 and above,Edge 79 and above& Plug-in free live view: Chrome 57.0 and above,Firefox 58.0 and above,Edge 16 and above
Pan/Tilt	Description
Home Position	Support
Interface	Description

Audio I/O	2/1
Alarm I/O	3/2
Serial Port	1 channel RS485 interface
Built-in Mic	Built-in two mics
Built-in Speaker	Support
Network	1 * RJ45 10M/100M Base-TX Ethernet
Certification	Description
EMC	CE-EMC (EN 55032:2015+A1:2020, EN 61000-3-3:2013+A1:2019, EN IEC 61000-3-2:2019+A1:2021, EN 55035:2017+A11:2020) FCC (FCC CFR 47 part 15 B, ANSI C63.4-2014)
Safety	CE LVD (EN 62368-1:2014+A11:2017) CB (IEC 62368-1:2014) UL (UL 62368-1, 2nd Ed., Issue Date: 2014-12-01)
Environment	CE-RoHS (2011/65/EU; (EU)2015/863); WEEE (2012/19/EU); Reach (Regulation (EC) No 1907/2006)
Protection	IP67 (IEC 60529:1989+AMD1:1999+AMD2:2013) IK10 (IEC 62262:2002)
General	Description
Power	DC 12V(±25%), PoE+ (IEEE 802.3at)
Power Consumption	Max 23W
Power Interface	Ø 5.5mm coaxial power plug
Dimensions	406 x 126 x 130mm(16.0" x 5.0" x 5.1")
Weight	2.14kg(4.72lb)
Working Environment	-40℃ ~ 60℃ (-40°F ~ 140°F), Humidity: ≤95% RH (non-condensing)
Storage Environment	-40℃ ~ 70℃ (-40°F ~ 158°F), Humidity: ≤95% RH (non-condensing)
Surge protection	6KV
Reset button	Support
Heater	Support

Dimensions



Zhejiang Uniview Technologies Co., Ltd.

No. 369, Xietong Road, Xixing Sub-district, Binjiang District, Hangzhou City, 310051, Zhejiang Province, China

Email: overseasbusiness@uniview.com; globalsupport@uniview.com

<http://www.uniview.com>

©2023 Zhejiang Uniview Technologies Co., Ltd. All rights reserved.

*Product specifications and availability are subject to change without notice.