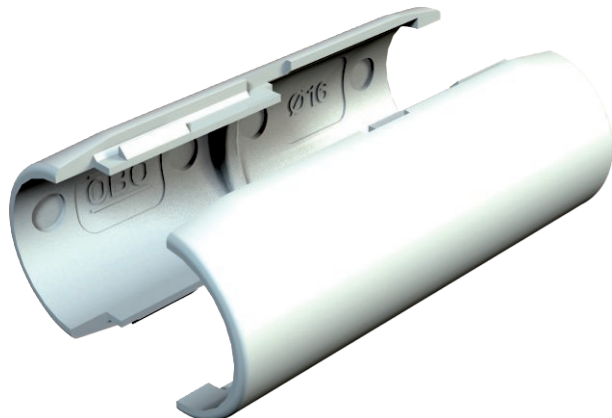


Technical data sheet

Quick pipe connecting sleeve, light grey

Item no. 2153835



The Quick Pipe connection sleeves are VDE-tested and consist of two interconnectable half shells, which can be closed around the Quick Pipe.

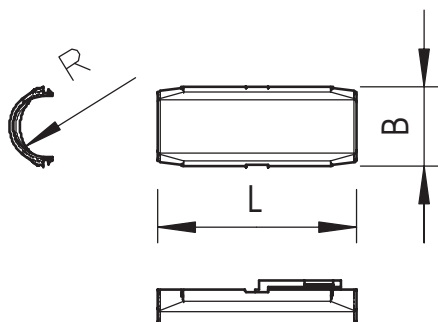


PVC Polyvinylchloride

Master data

Item no.	2153835
Type	2953 M M32 LGR
Description 1	Quick pipe connecting sleeve
Dimension	M32
Colour	Light grey
RAL number	7035
Material	Polyvinylchloride
Material symbol	PVC
Smallest sales unit (VG)	10 Piece
Weight	2,08 kg/100 pc.

Technical data



Dimension B	38,70 mm
Dimension L	80,00 mm
Dimension R	15,95 mm
Thread	M32
Size	M32
Halogen-free	<input type="checkbox"/>
Polished surface	<input type="checkbox"/>
max. permitted ambient temperature	0,00 - 60,00 °C