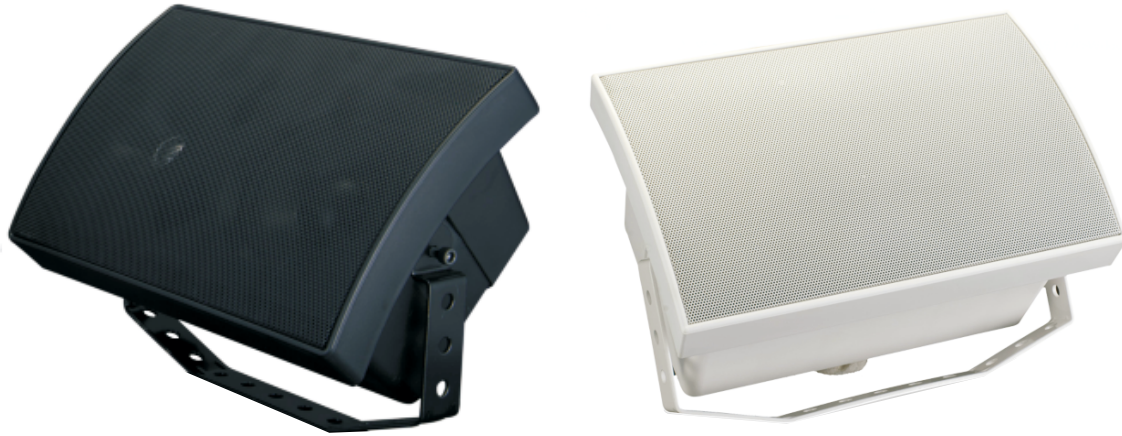




Wall Mount Speaker

T-785B T-785W



Specification:

	T-785B	T-785W
Model	T-785B	T-785W
Rated Power(100V)	40W/20W/10W/5W	
Max Power	80W	
SPL(1W/1M)	90dB	
Impedance	8Ω/250Ω/500Ω/1KΩ/2KΩ	
Frequency range	70-20KHz	
Speaker unit	5"×1 1.5"×1	
Dimensions	295×196×157 mm	
Weight	2.8Kg	