

To readers

Dear customer, we would like to express our heartfelt thanks to you for using ITC speakers. All products of our company have been rigorously tested before leaving the factory to keep the quality promise. Speaker, widely used in hotels, commercial buildings, supermarkets, schools, leisure and entertainment, is your ideal choice. Please read this instruction in detail to better install, debug and use it.

Safety instruction

- Please read this instruction in detail before use.
- Pay attention to the safety symbols and important warnings in this manual.
- It is recommended that you keep this manual for future reference.

Common safety symbols and warnings

The safety symbols and warnings shown in this manual are to avoid personal injury and property damage caused by improper operation. Please read this manual in detail before usage. Please be sure to understand the various safety symbols and warning signs for full understanding of the potential danger.



Warning

Improper use might cause personal injury, death and property damage.

During installing

- Never expose the speaker to anywhere that is or might be rainy, wet for no electric shock or fire.
- Please strictly follow the voltage specified on the speaker, since voltage higher than the limit may cause electric shock or fire. Never trim, twist, break, or replace wires.
- Do not install or erect speakers in unstable places, such as shaking tables or uneven surfaces, to avoid personal injury or property damage when the speakers fall.
- Install the speaker at the place where it can support the weight or on a stable bracket, to avoid personal injury or property damage when the speakers fall.
- Never plug or unplug with wet hands, otherwise, it may cause electric shock.
- When unplugging, make sure to pull the plug instead of the wire. Damaged wires may cause fire or electric shock.
- When moving the speaker, please pull out the plug in advance. Moving the speaker with the plug may cause fire or electric shock. When unplugging, make sure to pull the plug instead of the wire.
- Do not cover the vents on the speakers, otherwise, it may cause internal heating and fire.
- Avoid a place where it is wet or dusty, directly in contact with sunlight, near a heater, or where there is black smoke or steam, otherwise, it may cause fire or electric shock.

Indoor Wall-mounted Speaker



T-865CFB

OWNER'S MANUAL

Feature

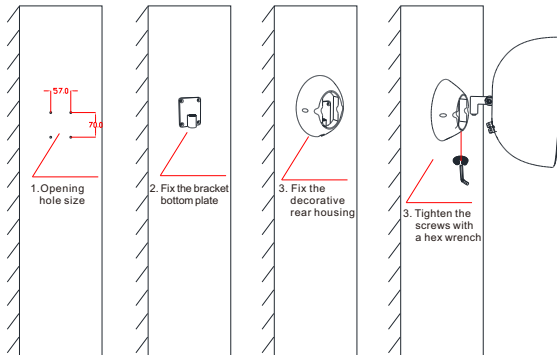
The housing is made of polystyrene material, which is light in weight and easy to install in various application scenarios.; The front panel adopts iron mesh decorative panel parts, which is beautiful and elegant; Multi-angle mounting bracket for various application scenarios; Adopt a 5.25 inch mid-woofer unit and a 25MM silk film woofer unit and a 25MM Silk film tweeter unit. 5 constant voltage volume adjustment switch. Built-in high-quality linear audio power transformer.

It is widely used in various small and medium meeting rooms, banquet halls, hotels, commercial buildings, schools, entertainment places, etc.

Specification

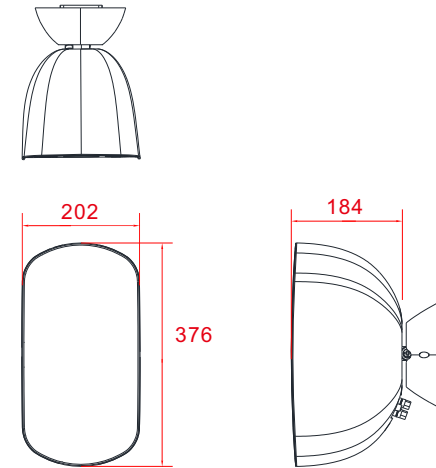
Model	T-865CFB
Rated power@100V	3W, 6W, 12.5W, 25W, 50W
Rated power@70V	1.5W, 3W, 6W, 12.5W, 25W
Frequency response	85Hz-20kHz
Sensitivity	84dB±3dB
MAX SPL	101dB±3dB
Speaker unit	5.25inch mid-woofer+25MM silk film
Coverage angle	H:45° ; V:50°
Product Size	202(W)x254(D)x376(H)mm
Weight	4.1Kg

Installation



- Step1 Open a fixed M4 hole on the wall and put plastic expansion rubber particles into it.
- Step2 Fix the bottom of the bracket with M4 screws and fix the decorative rear shell.
- Step3 Use M8 screws to fix the bracket bottom plate and the speaker, turn the screw clockwise and tighten.

Product Size



Label sticker

itc Wall Mount Speaker	
Model	T-865CFB
Rated power@100V	3W, 6W, 12.5W, 25W, 50W
Rated power@70V	1.5W, 3W, 6W, 12.5W, 25W
Sensitivity	84dB±3dB
MAX SPL	101dB±3dB
Freq Resp	85Hz-20kHz