

Quick Installation Guide

Mini Wireless N Router

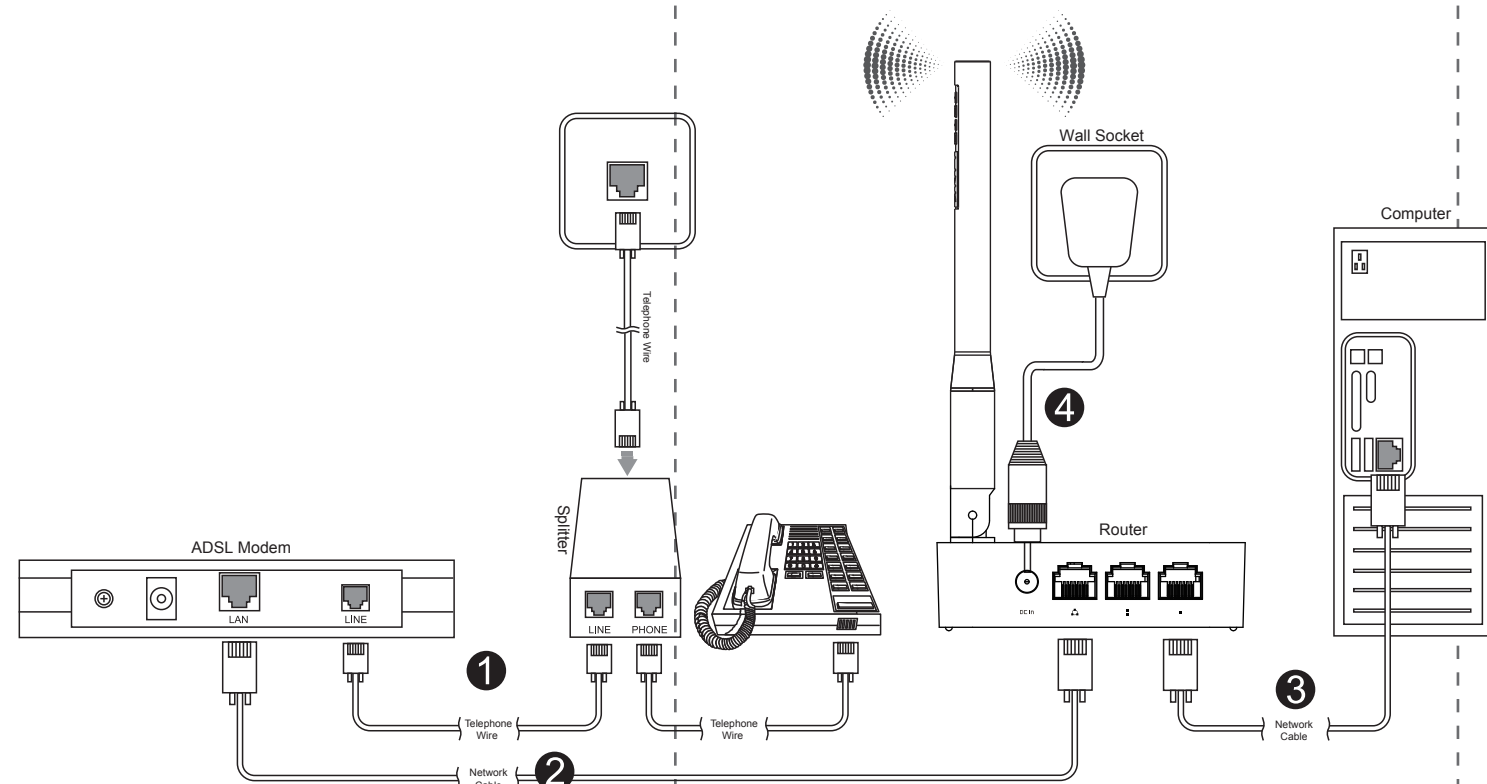
Suitable for: N100RE, N200RE

V1.1608

Copyrights © TOTOLINK All rights reserved. Website: <http://www.totolink.net>
Information in this document is subject to change without prior notice.

Note: For simplicity, we will take N100RE for example throughout this Guide.

1 Hardware Installation



LED Indicators

POWER	Light on when router is power on.
CPU	Light on when systems is working.
WiFi	The indicator light is on when Wi-Fi is enabled.
WAN	Light on when WAN port connected successfully.
1/2LAN	Light blinking while transmitting or receiving data.
LAN	Light on when the LAN port successful connected.
1/2LAN	Light blinking while transmitting or receiving data.

Ports and Buttons Description

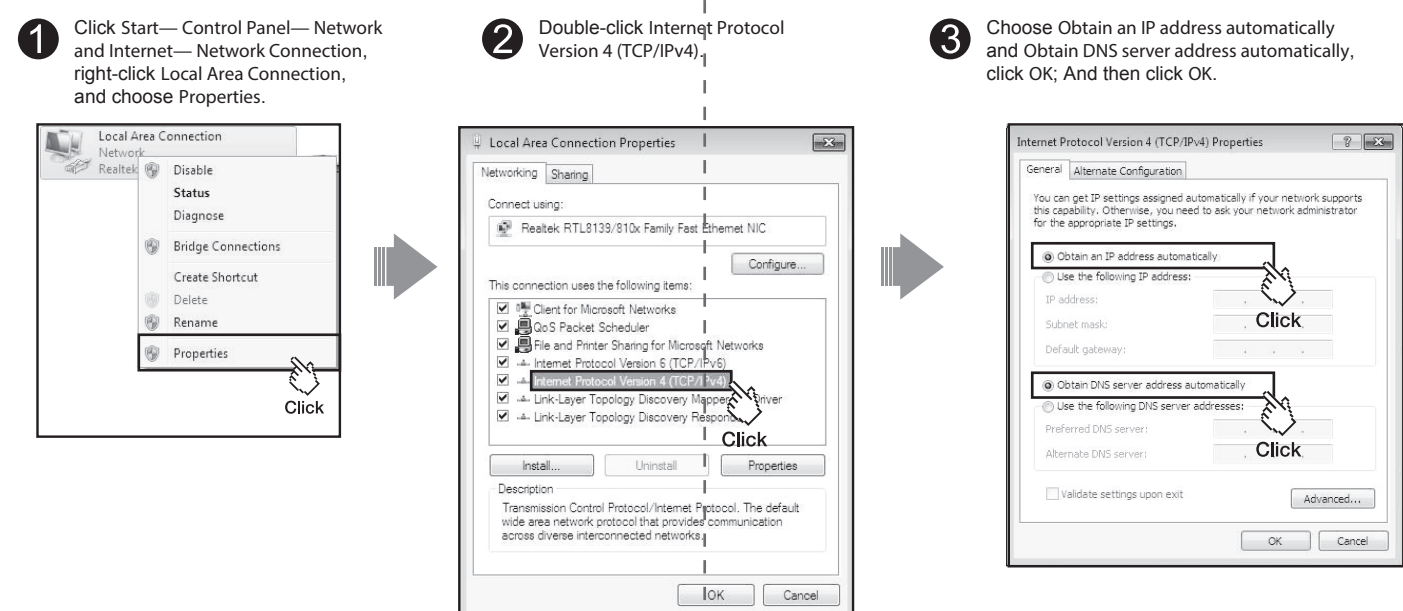
DC IN	Used for connecting the power adapter.
1/2LAN	Used for connecting the router to local PC.
WAN	Used for connecting the router to the Internet.
WPS	Press the button for about 2 seconds, the WPS function enabled.
RST	Use a pin to press and hold the RST button until all LEDs turn off, the router will restore to factory default settings.

NOTE:

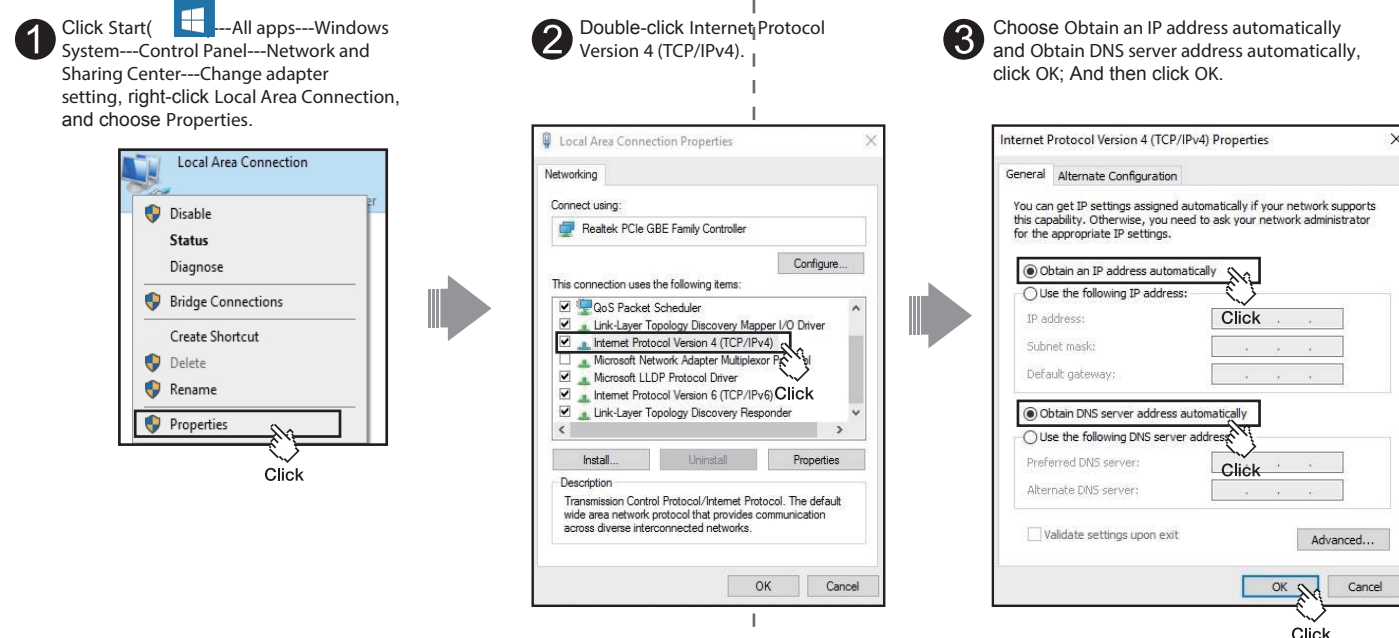
- Please disconnect the power adapter and all cables during thunderstorm weather;
- Keep away from heat source and keep well ventilated;
- Please pay attention to the waterproofing and moisture-proof when storing, transporting and running.
- The power adapter must be original or approved by TOTOLINK.
- Put the router in flat places.

2 Set Up PC

Windows Vista/7 For Windows Vista or Windows 7 Operating System, please comply with following steps to set up.

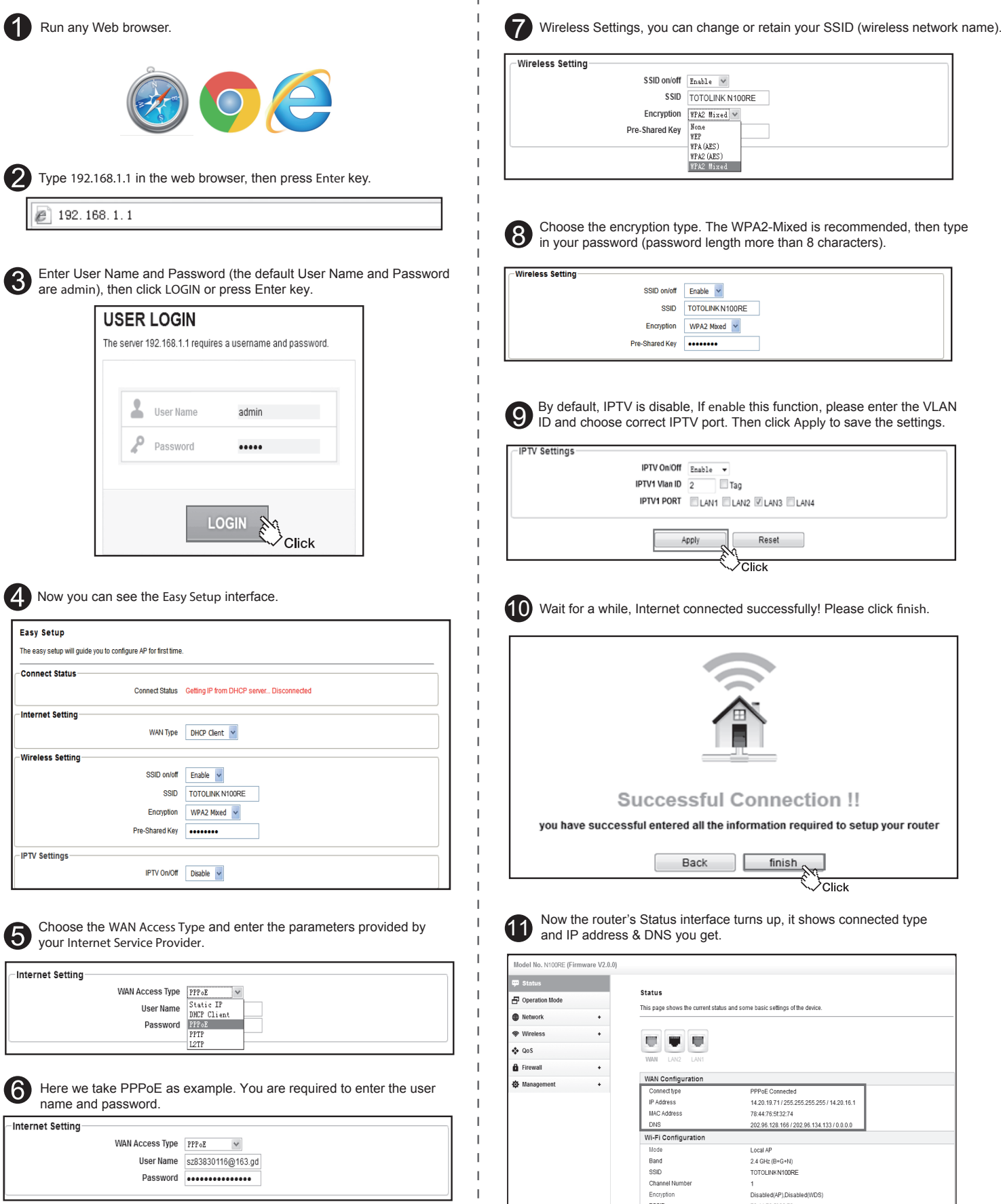


Windows 10 For Windows 10 Operating System, please comply with following steps to set up.



3 Set Up Router

Please set up the router following below steps.



4 FAQ

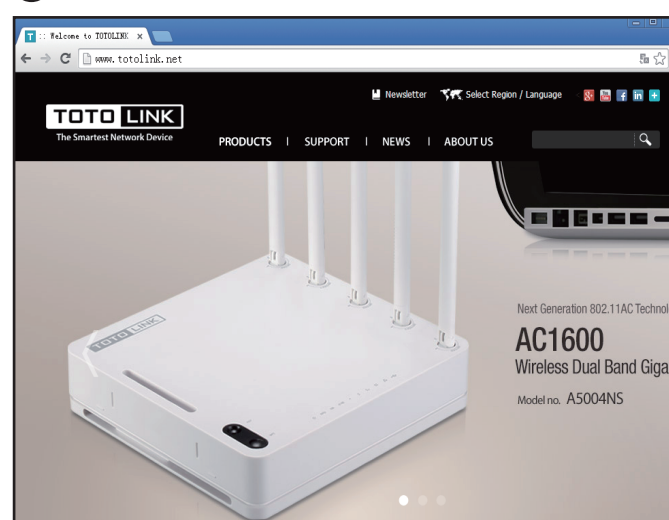
1 How to reset the router to default settings?

- Please make sure your router's power is on regularly, then use a pin to press the RST button for about 5-8s.
- Loosen the button until your router's LED lights all flashing, then you have reset your router to default settings.

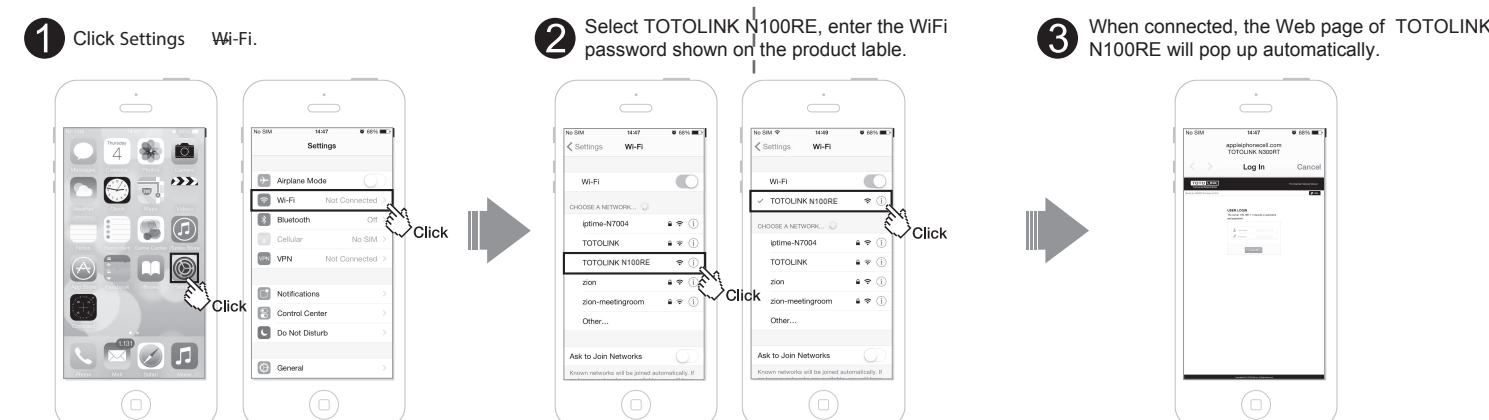
2 Forget the password?

Please reset your router to default settings firstly, and set a new password.
The default IP: 192.168.1.1
The default User name: admin
The default Password: admin

Try any website to test the Internet. Here we type in www.totolink.net.



Auto Pop-up Setting page for First Wi-Fi Devices Connection



NOTE:

After you set the Pre-Shared Key, please remember your SSID and the Pre-Shared Key to connect with your wireless LAN.

WPS: Press the WPS button for about 2 seconds, the system LED indicator keep solid light, it means WPS working.
RST: Use a pin to press and hold the RST button for 5-8 seconds, all LEDs blink quickly, the device will restore to factory default settings.